

.





..... 1 ..... & ..... ▲



---



---



1857

1863

1864

1877

1883

1907



**1997**  
*Report*

*U.S. News & World*

**1998**



**Undergraduate Admission (Class of 2009)**

**Total Freshman Class**

**2,174**

**Enrollment (Full- and Part-Time; Fall 2005)**

2005-2006

---

Gregory P. Barber, '69  
Peter W. Bell, '86

Geoffrey T. Boisi, '69

Patrick Carney, '70

Darcel D. Clark, '83

Charles I. Clough, Jr., '64

\*John M. Connors Jr., '63

Kathleen A. Corbet, '82

\*Joseph E. Corcoran, '59

Robert F. Cotter, '73

Robert M. Devlin

Francis A. Doyle, '70, MBA '75

Cynthia Lee Egan, '78

Mario J. Gabelli

\*William J. Geary, '80

Susan McManama Gianinno, '70

Mary J. Steele Guilfoile, '76

Kathleen Powers Haley, '76

\*Paul F. Harman, S.J., '61, MA '62

Daniel J. Harrington, S.J., '64, MA '65

John L. Harrington, '57, MBA '66

Robert K. Kraft

Robert B. Lawton, S.J.

\*William P. Leahy, S.J.

Peter K. Markell, '77

Kathleen M. McGillicuddy, '71  
(Newton College)

\*R. Michael Murray, Jr., '61, M.A. '65

Thomas P. O'Neill III, '68

Brian G. Paulson, S.J.

Pierre-Richard Prosper, '85

2005-2006

---

**Mary Jane Vouté Arrigoni**

**Casey C. Beaumier, S.J.**



2005-2006

2005-2006

---

**President**

**Chancellor**

**Academic Vice President and  
Dean of Faculties**

**Executive Vice President**

**Vice President for University  
Mission and Ministry**

**Vice President**

**Vice President for Facilities  
Management**

**Secretary of the University**

**Vice President for University  
Advancement**

**Vice President for Governmental &  
Community Affairs**

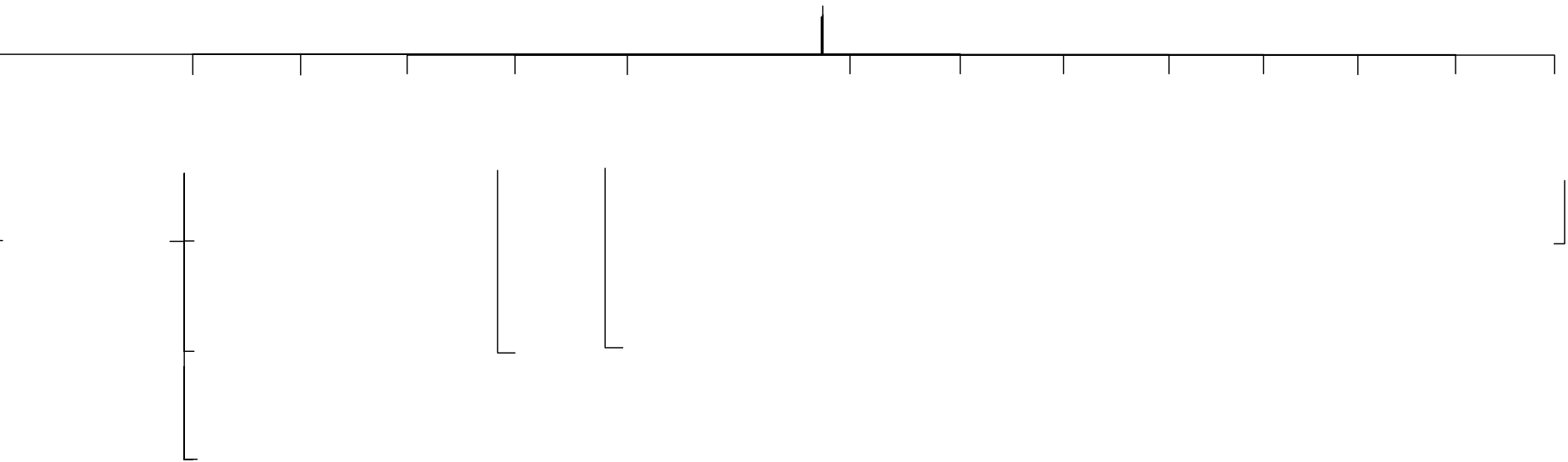
**Senior Vice President**

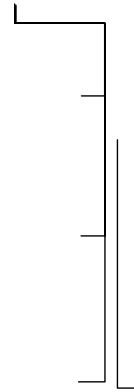
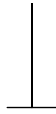
**Financial Vice President  
and Treasurer**

**Vice President for Information  
Technology Services**

**Vice President and Assistant  
to the President**

\_\_\_\_\_





Director  
Space  
Management



---

2005-2006

---

**Undergraduate Admission**

**Center on Aging & Work**

**AHANA Student Programs**

**Alumni Association**

**Athletics**

**Internal Audit**

**Auxiliary Services**

**Boisi Center for Religion and American  
Public Life**

**Bookstore**

**Budget**

**Campus Ministry**

**Campus School**

**Capital Construction**

**Capital Planning & Engineering**

**Career Center**

**Church in the 21<sup>st</sup> Century**

**Community Affairs**

**Compliance and Intellectual Prop** Tc-0os C5Tc 0 Tw ( ).1504 -6 [(C5TTD -0.0003 Tc -0.0036 Tw [(0Ce)-4.5Stto)-49lik  
Commnoy

CaUn-1.2(iveu)7.17.1s(Aff97.1T)J/7.1un-1.2(seu)7.1l  
5areerCDevel

**AuxiDavid**

**R.iMcKna,r**



---

By Gender, Fall 2005

Total

Total

2004-2005

School	Professor		Associate		Assistant		Instructor		Total		Faculty on leave**
<b>Total</b>	<b>236</b>	<b>36%</b>	<b>238</b>	<b>36%</b>	<b>148</b>	<b>22%</b>	<b>40</b>	<b>6%</b>	<b>662</b>	<b>100%</b>	<b>52</b>

2004-2005

School	Professor		Associate		Assistant		Instructor		Total	
<b>Total</b>	<b>242</b>	<b>37%</b>	<b>420</b>	<b>63%</b>	<b>662</b>	<b>100%</b>				

Total 20 0 1 262.98 543 TmT/T41004-239.1 0 136

2004-2005

Degree	Professor		Associate		Assistant		Instructor		Total	
<b>Total</b>	<b>214</b>	<b>100%</b>	<b>281</b>	<b>100%</b>	<b>136</b>	<b>100%</b>	<b>31</b>	<b>100%</b>	<b>662</b>	<b>100%</b>

95% of Boston College faculty members hold a doctoral degree

2004-2005

Degree	Women		Men		Total	
<b>Total</b>	<b>242</b>	<b>100%</b>	<b>420</b>	<b>100%</b>	<b>662</b>	<b>100%</b>

2004-2005

Rank	Women		Men		Total	
<b>Total</b>	<b>242</b>	<b>100%</b>	<b>420</b>	<b>100%</b>	<b>662</b>	<b>100%</b>

By School, 2004-2005

School	2004-2005		2005-2006		2006-2007		Full	
	No.	%	No.	%	No.	%	No.	%
<b>Total</b>	<b>633.20</b>	<b>100%</b>	<b>173.98</b>	<b>100%</b>	<b>150.55</b>	<b>100%</b>	<b>957.73</b>	<b>100%</b>







---

**By Year and Gender**

---

Fall	Men	Women	Total
------	-----	-------	-------

---

---

**Middle 50% Range of SAT Scores**

---

Class	Verbal	Math	Combined
-------	--------	------	----------

---

---

Geographic Distribution 00

---







---

By School, Fall 1996 through Fall 2005

	1996	1997	1998	1999	2000	2001	2002	2003	2004	2005
<b>Undergraduate Students</b>										
<b>Total Day Students</b>	8,957	8,921	8,922	9,189	8,929	9,000	8,916	8,851	9,059	9,019
<b>Total Undergraduate Graduate &amp; Professional</b>	9,581	9,452	9,407	9,628	9,393	9,440	9,339	9,295	9,487	9,567
<b>Total Graduate &amp; Professional</b>	3,059	3,100	3,159	3,083	2,982	2,923	2,988	3,185	3,195	3,221
<b>Total University</b>	12,640	12,552	12,566	12,711	12,375	12,363	12,327	12,480	12,682	12,788

By Year

---

Fall Semester			Spring Semester			Annual Average		
University Programs	External Programs	Total All Programs	University Programs	External Programs	Total All Programs	University Programs	External Programs	Total All Programs

---

By Year

Summer

---

By State

---





---

By School

---

Arts & Sciences 1995 2000 2002 2003 2004 2005



---



---

 By School, 2005-2006\*
 

---



---



---

 By Class or Program, 2005-2006\*
 

---

 Total Undergraduate 297

 Total Undergraduate 297

 Total Graduate/Professional 481  
 Total Enrolled Students\*\* 778

 Total Graduate/Professional 481

 Total 1065

 Total 1065


---

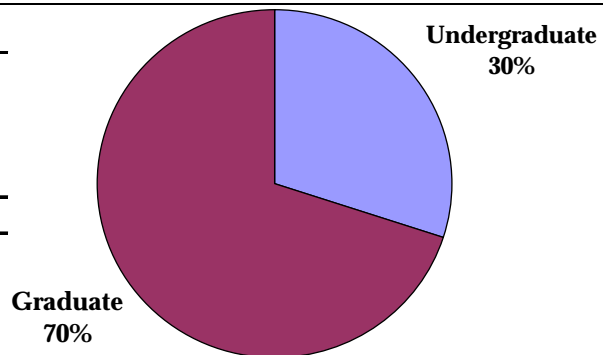


---

 By Gender and Program, 2005 - 2006
 

---

	Men	Women	Total
<b>Total</b>	<b>518</b>	<b>547</b>	<b>1065</b>



---

## Undergraduate and Graduate, 2005-2006

---

Under-graduate	Graduate/Professional	Total
----------------	-----------------------	-------

Under-graduate	Graduate/Professional	Total
----------------	-----------------------	-------



\*  
 By Degree and Number of Majors

	2000-2001	2001-2002	2002-2003	2003-2004	2004-2005
<b>College of Arts and Sciences</b>					
<b>A.B.</b>					
<b>B.S.</b>					
<b>Lynch School of Education - A.B.</b>					
<b>Carroll School of Management - B.S.</b>					
<b>Connell School of Nursing</b>					
<b>Woods College of Advancing Studies - A.B.</b>					
<b>Total Undergraduate Degrees Conferred</b>	<b>2,336</b>	<b>2,311</b>	<b>2,313</b>	<b>2,223</b>	<b>2,341</b>

---

---

By Major\*

---

	2000-2001	2001-2002	2002-2003	2003-2004	2004-2005
--	-----------	-----------	-----------	-----------	-----------

---

---

<b>TOTAL**</b>	<b>2,239</b>	<b>2,214</b>	<b>2,225</b>	<b>2,131</b>	<b>2,241</b>
----------------	--------------	--------------	--------------	--------------	--------------

---



---

**By School and Major\***

2004-2005

Total

Total

Total



---

Dollars Awarded , 000- 00

2000-2001

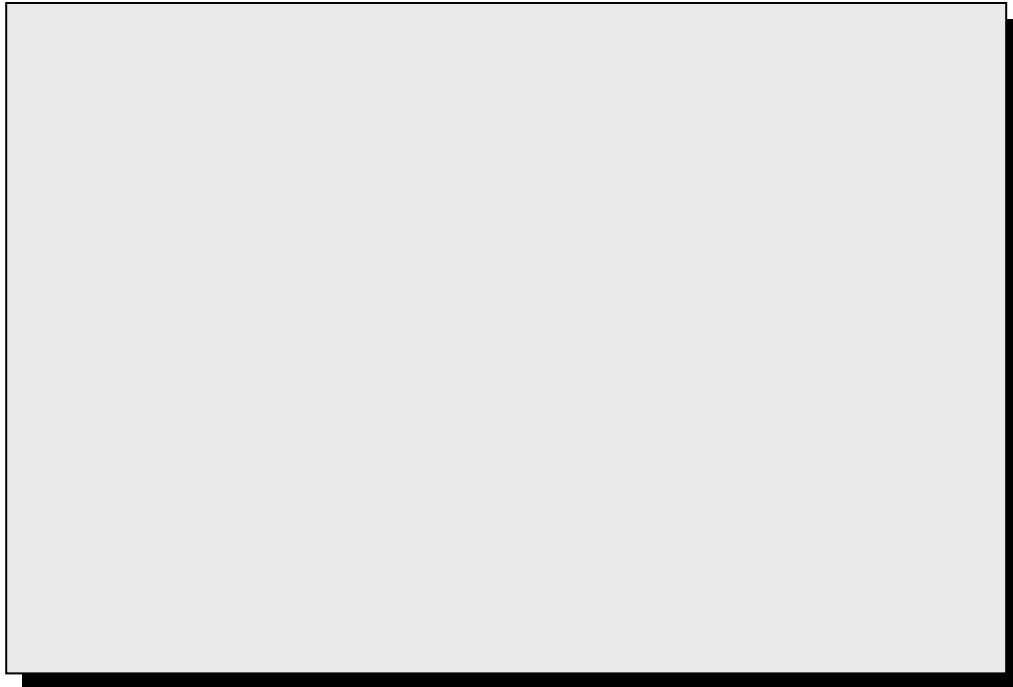
2001-2002

2002-2003

2003-2004

2004-2005

Undergraduates (All) Receiving:







2005-2006

---

**President**

**Vice President/President Elect**

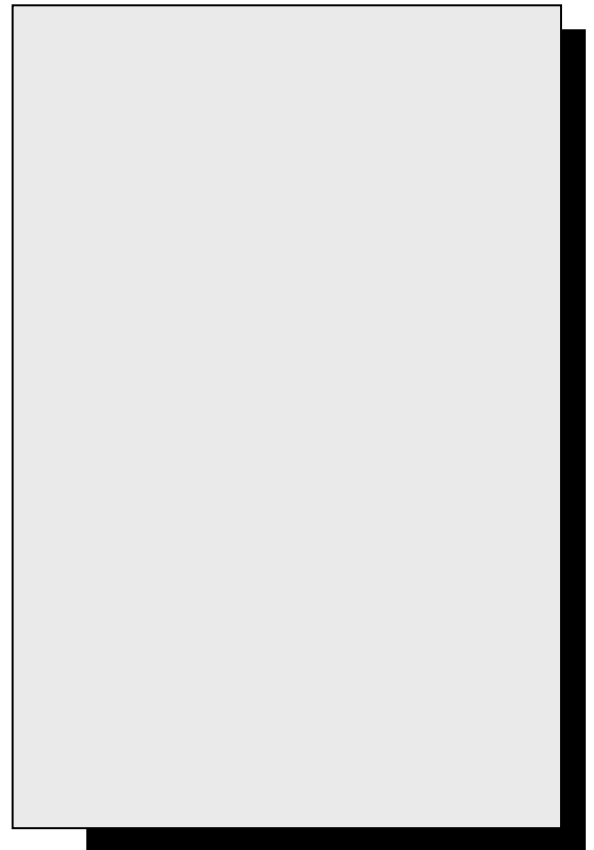
**Treasurer**

**Secretary**

**President**

**Chair, Council of Past Presidents;  
Co-Chair, Physical Facilities**

**Chaplain**



---

Fall 2005

---

By Primary School and Class, Fall 2005

---

Class	A&S	Ed.	Mgt. Nursing	Adv	Newton	Grad.	Grad.	Grad	Grad	Grad	Social	Weston	Hon.	***EX
-------	-----	-----	--------------	-----	--------	-------	-------	------	------	------	--------	--------	------	-------



---

### By Primary School and Class, Fall 2005 (Continued)

Class	A&S	Ed.	Mgt. Nursing	Adv Stds	Newton College	Grad. A&S	Grad. Mgt.	Grad. Ed.	Grad. Nurs.	Grad. AdvStds	Social Work	Weston Law	Weston Theo.	Hon. Deg.	***EX Alum.	Total
-------	-----	-----	--------------	----------	----------------	-----------	------------	-----------	-------------	---------------	-------------	------------	--------------	-----------	-------------	-------











---

### Location and Primary Use, Spring 2005

Name	Location	Primary Use	Date Constructed or Acquired	Gross Square Footage <sup>1</sup>
------	----------	-------------	---------------------------------	--------------------------------------





---

**Location and Primary Use, Spring 2005 (Continued)**

---

Name	Location	Primary Use	Date Constructed or Acquired	Gross Square Footage <sup>1</sup>
------	----------	-------------	---------------------------------	--------------------------------------

---

---

<b>Total Gross Square Footage</b>	<b>6,496,268</b>			
-----------------------------------	------------------	--	--	--

---



Fall 2005

---

**Lecture/Event Facility & Location**

**Standard Seating**

**Auditoriums**

**Athletics**

Spring 2005

BUILDING	OFFICES	BUILDING	OFFICES
<b>Brighton Campus</b>			
<b>Brighton Campus Subtotal</b>	<b>192</b>		
<b>Chestnut Hill Campus</b>			
		<b>Chestnut Hill Campus Subtotal</b>	<b>1,534</b>

Fall 2005

---

**Dining Halls**

**Location**

**Function Rooms**

**Location**

---





---

For the Five Years Ending May 31, 2005 (Dollars in Millions)

---



---

**For the Five Years Ending May 31, 2005 (Dollars in Millions)**

---

	2001	2002	2003	2004	2005
Assets					

For the Ten Years Ending May 31, 2005

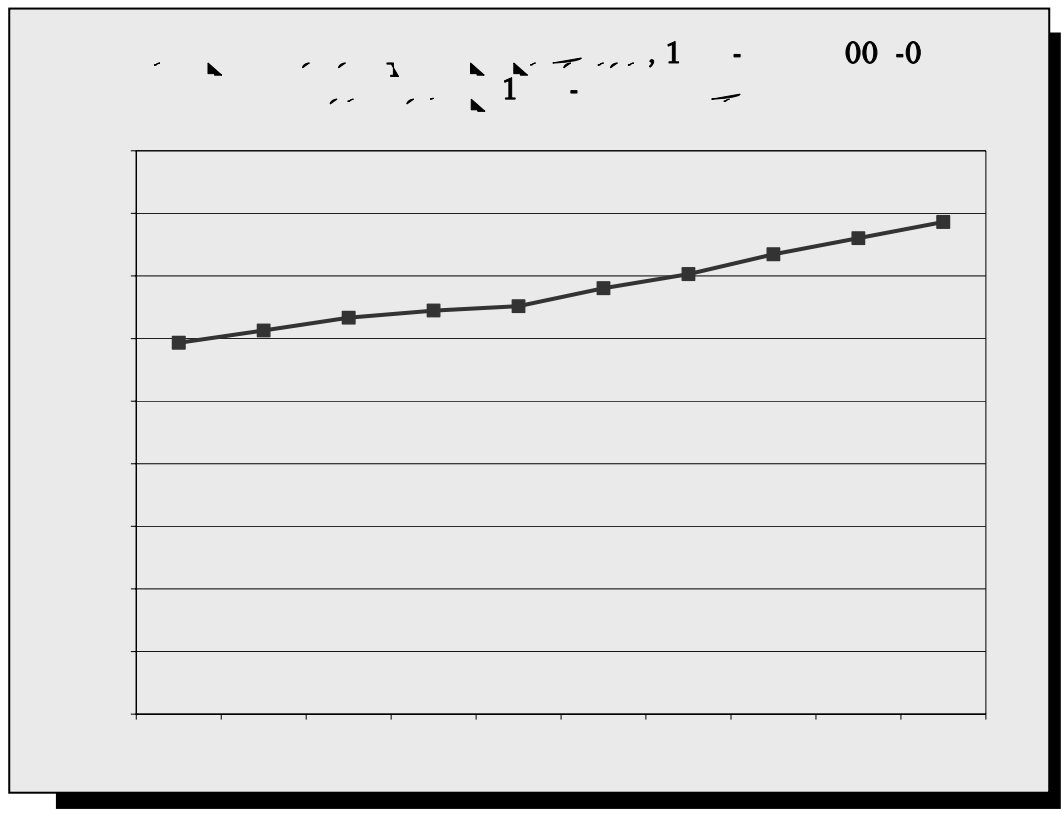
	1997	1998	1999	2000	2001	2002	2003	2004	2005	2006
<b>Undergraduate Schools</b>										

**Graduate Schools**

**Room Charge Per Student**

# Effect of Inflation and Real Growth

Academic Year	Tuition in Absolute Dollars	Consumer Price Index**	Tuition in Constant 1982-84 Dollars
---------------	-----------------------------	------------------------	-------------------------------------





**Bapst Library**

**Law Library**

**School of Social Work Library**

**The John J. Burns Library of  
Rare Books and Special Collections**

**Newton Resource Center**

**Educational Resource Center**

**Geophysics Library**

**O'Neill Library**



**Quest: The Library Information System**

*[www.bc.edu/quest](http://www.bc.edu/quest)*

**Digital Resources**

*[www.bc.edu/libraries.html](http://www.bc.edu/libraries.html)*









Highlights of Sponsored Activities  
2004-2005

---

2004-2005

---

Department	No. of Awards	Amount	Department	No. of Awards	Amount
------------	---------------	--------	------------	---------------	--------

---

**Total Accounted Expense (Dollars in Thousands)**

---

1995-96    1996-97    1997-98    1998-99    1999-00    2000-01    2001-02    2002-03    2003-04    2004-05

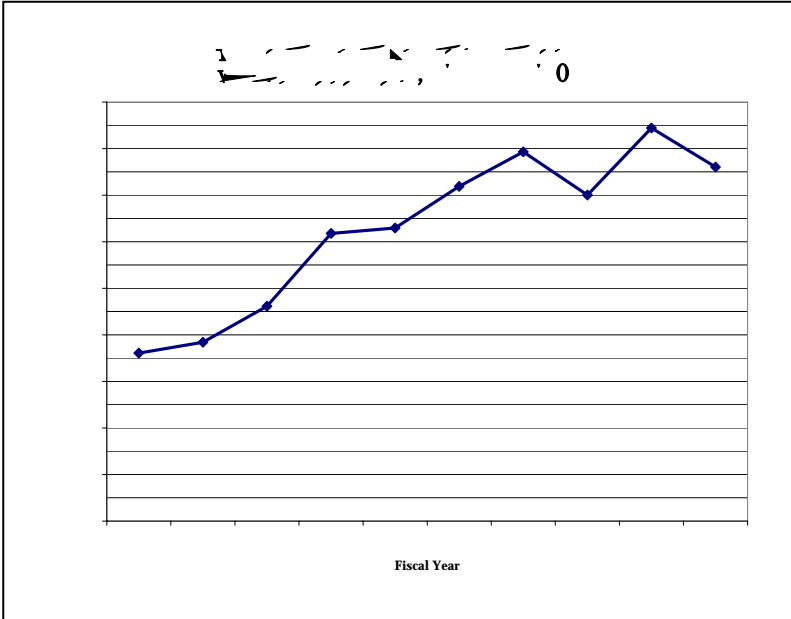
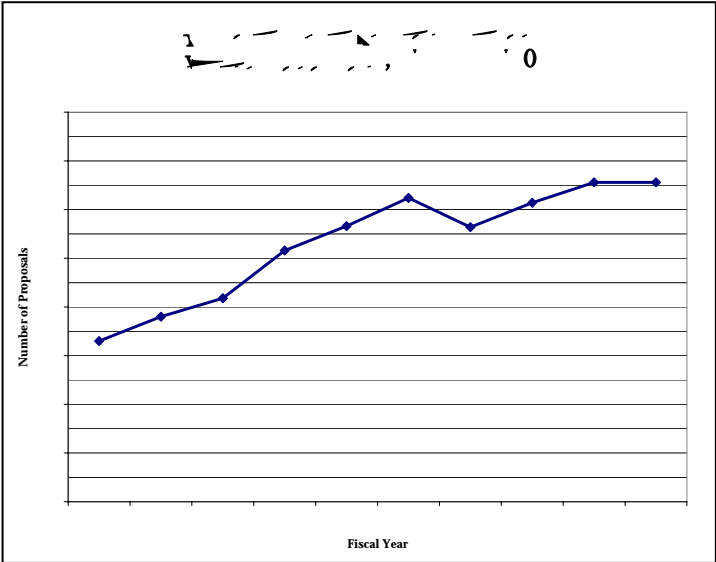
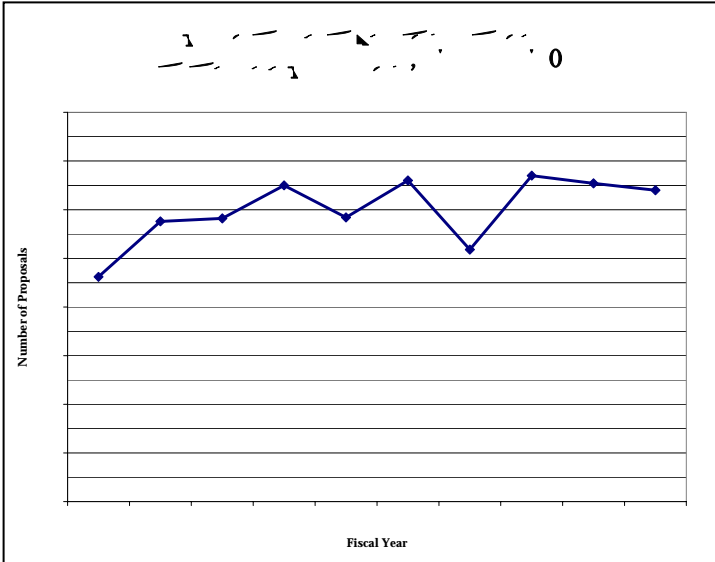
---

By Department (Dollars in Thousands)

---

1995-96    1996-97    1997-98    1998-99    1999-00    2000-01    2001-02    2002-03    2003-04    2004-05

Fiscal Year 1994-95 through 2003-04



**THE NUMBER OF SPONSORED RESEARCH AWARDS RECEIVED AT BOSTON COLLEGE NEARLY DOUBLED BETWEEN FY96 AND FY05. DURING THAT SAME PERIOD, THE DOLLAR AMOUNT OF THE AWARDS RECEIVED INCREASED BY 111%.**



---

By Department, 1995-1996 through 2004-2005

1995-96 1996-97 1997-98 1998-99 1999-00 2000-01 2001-02 2002-03 2003-04 2004-05

2004-2005

---

Title	Source of Funding	Amount
Biology		





*<http://www.bc.edu/research/csteep/>*

**Center for Work and Family**

*<http://www.bc.edu/cwf>*





---

	2000-2001	2001-2002	2002-2003	2003-2004	2004-2005
	W-L-T	W-L-T	W-L-T	W-L-T	W-L-T
<b>Men's Records</b>					

**Women's Records**

---

Varsity Sport	Men	Women
00 - 00		

---

<b>Totals</b>	<b>387</b>	<b>374</b>
<b>Total Participants</b>	<b>761</b>	

---

2004-2005

Sport	# of Teams	# of Participants		
		Male	Female	Total
Fall				
Winter				
Spring				
<b>Totals</b>	<b>482</b>	<b>5090</b>	<b>1219</b>	<b>6309</b>











2002

2004

2003





2005 – 2006

**Fall Semester**

**Spring Semester**



- . . . ( . . . )

---