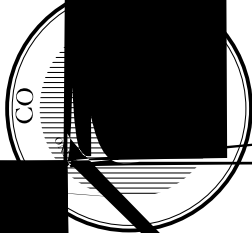


BOSTON COLLEGE

A

2000-2010



The Boston College Fact Book are available
on College web site at
bc.edu/factbook

Boston College 1983-2010

TABLE OF CONTENTS

Foreword.....	2
The Mission of Boston College.....	2
A Brief History of Boston College	6
A Boston College Chronology.....	7
Boston College Profile.....	11
 ADMINISTRATION & FACULTY	
Board of Trustee Membership	14
Trustee Associate Membership	15
Board of Trustee Chairmen	16
Officers of the University.....	17
Academic Administration	17
Academic Institutes and Centers.....	18
University Centers.....	19
The Jesuit Community at Boston College.....	19
The Weston Jesuit Community at Boston College	19
Chart of Administration.....	20
Provost and Dean of Faculties Units.....	21
Executive Vice President Units.....	23
Professional, Administrative, and Support Staff Personnel by Gender.....	24
Professional, Administrative, and Support Staff Personnel by VP Area	25
Restricted Funded Personnel by Gender and FTE.....	25
Faculty:	
by School and Rank.....	25
by School and Gender	26
by School and Tenure Status.....	26
by Highest Degree Earned and Gender.....	26
by Rank and Gender.....	27
by Highest Degree Earned and Rank.....	27
Full-Time Faculty, Teaching Fellows, and Teaching Assistants:	
Full-Time Equivalent by School.....	27
by School and Department.....	28
Faculty Compensation:	
by Rank	29
by Rank, Average Compared to AAUP Category I	29
 STUDENTS	
Freshman Enrollment by Year and Gender (Full-Time).....	32
Freshman Admission Profile.....	32
Freshman Applications, Acceptances, and Enrollment (Full-Time).....	32
Class of 2013 Applications, Acceptances, and Enrollment – Geographic Distribution.....	33
Top Cross Application Competitor Schools of Enrolling Freshmen	34
Undergraduate Transfer Students:	
Applications, Acceptances, and Enrollment (Full-Time)	34
by Type of Previous Institution and Gender	34
Geographic Distribution of Undergraduate Students	35
Enrollment:	
by School, Gender, and Status	36
Student Credit Hours by School.....	36

by School, Gender, and Status (Five Years)	37
AHANA and International Enrollment.....	37
Full-Time Equivalent Enrollment by School.....	38
Undergraduates Studying Abroad	39
Summer Session Enrollment	39
Graduate Enrollment by Degree & Program	40
Undergraduate Majors by School.....	41
Undergraduate Minors by School	42
Most Popular Undergraduate Majors.....	43
Disciplines with Largest Percent Increase in Undergraduate Majors	43
Most Popular Undergraduate Minors	43
International Students and Scholars:	
by School.....	44
by Class or Program	44
by Gender and Status.....	44
by Country	45
Degrees Conferred:	
Undergraduate and Graduate by Degree and Gender	46
Undergraduate by Degree and Number of Majors	47
Undergraduate by School and Major	48

A BRIEF HISTORY OF BOSTON COLLEGE

Boston College was founded by the Society of Jesus in 1863, and is one of twenty-eight Jesuit colleges and universities in the United States. With three teachers and twenty-two students, the school opened its doors on September 5, 1864. At the outset and for more than seven decades of its first century, the College remained an exclusively liberal arts institution with emphasis on the Greek and Latin classics, English and modern languages, and with more attention to philos

A BOSTON COLLEGE CHRONOLOGY

- | | | | |
|------|--|------|---|
| 1857 | Father John McElroy, S.J., purchased property in the South End of Boston for a new college. | 1940 | Cotton Bowl vs. Clemson (3-6) first bowl game. |
| 1863 | Gov. John A. Andrews signed the charter of Boston College, April 1. First meeting of the Boston College trustees was held on July 6. | 1941 | Cardinal O'Connell purchased the Liggett estate, the upper campus, and gave it to the College. |
| 1864 | Boston College opened on September 5, with Father John Bapst, S.J., as president and Father Robert Fulton, S.J., as dean. Twenty-two students were admitted. | 1946 | To accommodate post-war enrollment, army surplus barracks became dormitories on the site of present Campion Hall; a larger office/classroom building was erected on the site of McGuinn, and a recreation building on the site of Cushing Hall. |
| 1877 | Commencement was held. Nine students received First A.B. degrees, June 28. | 1947 | Construction began on the first permanent building since the completion of Bapst in 1928, to house the College of Business Administration (occupied in September 1948). The School of Nursing opened at 126 Newbury Street. |
| 1883 | The Stylus, the College literary magazine, founded. | 1949 | College acquired small reservoir (lower campus). Hockey team won national title at Colorado Springs. |
| 1907 | Father Thomas Gasson, S.J., named president; purchased 31-acre Lawrence farm in Chestnut Hill for new campus. | 1951 | Lyons Hall was completed in July. |
| 1913 | Gasson Hall completed. First graduation held at the Heights, June 18. Four classes enrolled in Gasson in September. | 1952 | The School of Education opened in September in Gasson Hall. Doctoral programs were begun in Economics, Education, and History, the beginning of increased emphasis on graduate education. |
| 1918 | Conscription and voluntary enlistment for World War I reduced the College enrollment to 125 in October, down from 671 two years earlier. | 1954 | Law School moved to St. Thomas More Hall on the Chestnut Hill campus. |
| 1919 | Boston College won its first major football victory, 5-3, over favored Yale at New Haven. First issue of The Heights, student weekly, printed November 17. | 1955 | Claver, Loyola, and Xavier Halls opened, first campus residences constructed by BC. The School of Education moved into Campion Hall. |
| 1923 | Baseball team beat Holy Cross 4-1 before 30,000 at Braves Field, June 18. | 1957 | Graduate School of Management founded. Alumni Stadium dedicated September 21. |
| 1924 | Summer School started. | 1958 | Latin no longer required for the A.B. degree. The College of Arts and Sciences Honors Program and the Scholar of the College Program were begun. The original gymnasium, Roberts Center, and the first hockey rink, McHugh Forum, were opened. |
| 1925 | Graduate School of Arts and Sciences started. | 1959 | The Board of Regents, advisory to the trustees and administration, was established. |
| 1928 | Bapst Library opened, the fourth of the early Maginnis and Walsh buildings. Weston Observatory, the seismological station, founded. | 1960 | The Nursing School occupied its campus building, Cushing Hall. Three more student residences, named for the early bishops of Boston, Cheverus, Fenwick, and Fitzpatrick, were completed. |
| 1929 | Law School opened at 11 Beacon Street. Boston Evening College started as "Boston College Intown" at 126 Newbury Street, Boston. | 1961 | McElroy Commons opened. |
| 1935 | Greek requirement for the A.B. degree dropped. | | |
| 1936 | Graduate School of Social Work opened at Newbury Street. | | |
| 1938 | School of Management opened at Newbury Street as the "College of Business Administration." | | |

- Dame at South Bend, 41–39, when Notre Dame was ranked No. 1 in the country. Renovation of Fulton Hall was begun. The Theater Department was established.
- 1994 Graduate programs in Nursing and Education separated from the Graduate School of Arts & Sciences. Father Monan established a University Academic Planning Council to map university strategies. A garage for 900 cars was completed behind St. Mary's Hall. The stadium seating capacity was enlarged from 32,000 to 44,500.
- 1995 On October 6, 1995, the trustees elected Father William P. Leahy, S.J., to succeed Father J. Donald Monan, S.J., as president. Fulton Hall reopened, enlarged and transformed exteriorly to match the Gothic style of the early buildings.
- 1996 The Law School's new library was completed and opened on the Newton campus in January. U.S. News & World Report ranked Boston College 16th among the nation's teaching universities and 37th in the national university category. The student residence at 70 St. Thomas More Road was named Thomas A. and Margaret A. Vanderslice Hall; the nearby residence building at number 80 was named Gabelli Hall; the Art Museum became the Charles S. and Isabella V. McMullen Museum of Art. On July 31, Father Monan's 24-year presidency ended, and on October 18, Father William P. Leahy, S.J., was inaugurated as the 25th president of Boston College.
- 1997 In a rating of graduate schools, U.S. News & World Report placed Boston College Law School 22nd in its field, while the Graduate School of Social Work was ranked 14th, the School of Nursing 27th, and the School of Education 28th. In March, Father Leahy was homilist at the annual St. Patrick's Day Mass at the Cathedral of the Holy Cross.
- 1998 The formal opening of the Irish Institute and the Irish Studies Program was held at Connolly House. Work began on a three-year project to renovate and expand Higgins Hall, which houses the Biology and Physics departments. U.S. News & World Report rated the BC schools of law, education, and nursing among the top 25 in their fields. BC undergraduates won more than 20 prestigious national fellowships, including a dozen Fulbrights and a coveted Marshall Scholarship.
- 1999 BC's School of Education was named the Carolyn A. and Peter S. Lynch School of Education in recognition of the couple's gift of more than \$10 million. For the fifth consecutive year, BC was ranked among the top 40 national universities by U.S. News & World Report. The McMullen Museum of Art's exhibition *Saints and Sinners: Caravaggio and the Baroque Image* attracted more than 65,000 visitors to the campus. BC announced a \$400 million "Ever to Excel" capital campaign.
- 2000 The annual U.S. News & World Report survey ranked Boston College 38th among the nation's 228 national universities. BC, Notre Dame, and Georgetown were the only Catholic universities in the top 40. Geoffrey and Rene Boisi committed \$5 million to establish the Center for Religion and American Public Life, directed by social scientist Alan Wolfe. BC appointed Sheila Blair and Jonathan Bloom to share the Norma Jean Calderwood Chair in Islamic and Asian Art.
- 2001 The BC School of Nursing was renamed the William F. Connell School of Nursing in honor of longtime trustee, William F. Connell, '59. A \$2 million grant from the Lilly Endowment supported a BC program to encourage students to integrate faith and career. BC established a permanent Dublin home, on St. Stephens Green, as a resource for the University's Irish Studies Program.
- 2002 Boston College received a record number of undergraduate applications for the 2002-2003 academic year, with more than 21,000 applicants for the approximately 2,200 available seats. In the April issue of U.S. News & World Report, the Carroll Graduate School was ranked 39th in the nation. The former Evening College was renamed the Woods College of Advancing Studies in honor of longtime dean Rev. James A. Woods, S.J.; President William P. Leahy, S.J., announced that Boston College would launch an initiative called "The Church in the 21st Century" lauA09 Ttf

BOSTON COLLEGE PROFILE

ADMINISTRATION & FACULTY

BOARD OF TRUSTEE MEMBERSHIP, 2009-2010

- Drake G. Behrakis '86**
President & Chief Executive Officer
Marwick Associates
- Matthew J. Botica, Esq. '72**
Partner
Winston & Strawn
- Cathy M. Brienza '71 NC**
Partner
WallerSutton 2000, L.P.
- John E. Buehler, Jr. '69**
Managing Partner
Energy Investors Fund Group LLC
- Patrick Carney '70**
Chairman and Chief Executive Officer
Claremont Companies
- Darcel D. Clark '83**
Supreme Court Justice
State of New York
- Charles I. Clough, Jr. '64**
Chairman and Chief Executive Officer
Clough Capital Partners, LP
- Juan A. Concepcion, Esq. '96, '97,
J.D. & MBA '03**
Attorney
Nixon Peabody LLP
- John M. Connors, Jr. '63, D.B.A.'07 (Hon.)**
Chairman
The Connors Family Office
- Kathleen A. Corbet '82**
Founder and Principal
Cross Ridge Capital, LLC
- Leo J. Corcoran, Esq. '81**
Autumn Development Company, Inc.
- Robert F. Cotter '73**
Coral Cables, FL 33133
- Robert M. Devlin**
Chairman
Curragh Capital Partners
- Francis A. Doyle '70, M.B.A. '75**
President and Chief Executive Officer
Connell Limited Partnership
- Cynthia Lee Egan '78**
President of Retirement Plan Services
T. Rowe Price
- John R. Egan '79**
Managing Member
Carruth Management
- John F. Fish***
President and Chief Executive Officer
Suffolk Construction Company
- Keith A. Francis '76**
Intelligence Analyst
Bureau of Alcohol, Tobacco & Firearms
- Mario J. Gabelli**
Chairman
GAMCO Investors, Inc.
- William J. Geary '80***
Partner
North Bridge Venture Partners
- Susan McManama Gianinno '70**
Chairman & Chief Executive Officer
Publicis Worldwide, North America
- Janice Gipson '77**
- Mary J. Steele Guilfoile '76**
Chairman
MG Advisors, Inc.
- Kathleen Powers Haley '76**
Manager
Snows Hill Management LLC
- Michaela Murphy Hoag '86**
Interior Designer
Treasured Designs
- T. Frank Kennedy, S.J. '71***
Rector
Boston College Jesuit Community
- John L. LaMattina '71***
Senior Partner
Pure Tech Ventures
- William P. Leahy, S.J.***
President
Boston College
- Peter S. Lynch '65, LL.D. '95 (Hon.)**
Vice Chairman
Fidelity Management & Research
Company
- Thomas J. Maloney '75**
President
Lincolnshire Management, Inc.
- Douglas W. Marcouiller, S.J.**
Provincial
Jesuits of the Missouri Province
- Peter K. Markell '77**
Vice President of Finance
Partners HealthCare System, Inc.
- Kathleen M. McGillicuddy '71 NC***
Executive Vice President (Ret.)
FleetBoston Financial
- Robert J. Morrissey, Esq. '60***
Senior Partner
Morrissey, Hawkins & Lynch
- John V. Murphy '71**
Chairman, President and Chief Executive Officer
Oppenheimer Funds, Inc.
- R. Michael Murray, Jr. '61, MA '65***
Director Emeritus
McKinsey & Company, Inc.
- Stephen P. Murray '84**
President and Chief Executive Officer
CCMP Capital
- Brien M. O'Brien '80**
Chairman and Chief Executive Officer
Advisory Research, Inc.
- David P. O'Connor '86**
Senior Managing Partner and President
High Rise Capital Management, LP
- Brian G. Paulson, S.J.**
President
St. Ignatius College Prep
- Scott R. Pilarz, S.J.**
President
University of Scranton
- Paula D. Polito '81**
Managing Director
USB Financial Services, Inc.
Wealth Management Americas
- Richard F. Powers III '67**
Advisory Director (Ret.)
Morgan Stanley
- Pierre-Richard Prosper '85**
Counsel
Arent Fox
- Thomas F. Ryan, Jr. '63**
Private Investor (Ret.)
- Rev. Nicholas A. Sannella '67***
Pastor
Immaculate Conception Parish
- Bradley M. Schaeffer, S.J., M.Ed. '73**
Rector
Weston Jesuit Community
- Susan Martinelli Shea '76**
Special Education Teacher (Ret.)
- Marianne D. Short, Esq. '73 NC, J.D. '76***
Managing Partner
Dorsey & Whitney LLP
- Dr. Richard Syron '66, LL.D. '89 (Hon.)**
- David C. Weinstein, Esq. '75**
Executive V.P. for Fidelity Investments (Ret.)

*Executive Committee Member
Note: Only Boston College degrees listed
Source: President's Office

TRUSTEE ASSOCIATE MEMBERSHIP, 2009-2010

Mary Jane Vouté Arrigoni

Peter W. Bell '86

Partner
Highland Capital Partners

Geoffrey T. Boisi '69

Chairman and Senior Partner
Roundtable Investment Partners LLC

Wayne A. Budd, Esq. '63

Senior Counsel
Goodwin Procter LLP

Denis H. Carroll '64

Chairman and Chief Executive Officer
Holden Industries, Inc.

James F. Cleary '50, D.B.A. '93 (Hon.)

Advisory Director
UBS

Joseph E. Corcoran '59

Chairman
Corcoran Jennison Co., Inc.

John F. Cunningham '64

Chairman and Chief Executive Officer
Cunningham and Company

Brian E. Daley, S.J.

Professor, Department of Theology
University of Notre Dame

Andrew N. Downing, S.J.

Doctoral Student
University of Notre Dame

Emilia M. Fanjul

John F. Farrell, Jr.

Yen-Tsai Feng

Roy E. Larsen Librarian (Ret.)
Harvard College

Charles D. Ferris, Esq. '54, J.D. '61, LL.D. '78 (Hon.)

Senior Partner
Mintz, Levin, Cohn, Ferris, Glovsky & Popeo, P.C.

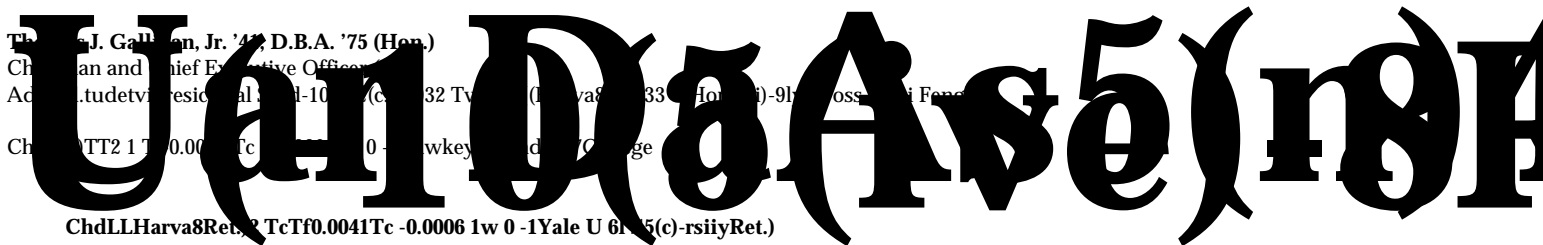
Thomas J. Flanagan '42

Retired

Thomas J. Galligan, Jr. '47, D.B.A. '75 (Hon.)

Chairman and Chief Executive Officer
Academy of Television Arts & Sciences (1961-1991)

Chairman of the Board of Trustees, Yale University



TRUSTEE ASSOCIATE MEMBERSHIP (CONTINUED), 2009-2010

John A. McNeice, Jr. '54, D.B.A.'97 (Hon.)

ACADEMIC INSTITUTES AND CENTERS 2009-2010

Boisi Center for Religion & American Public Life

Alan Wolfe, Director

Center for Asset Management

Hassan Tehranian, Director

Center for Catholic Education

Joseph M. O'Keefe, S.J., Interim Executive Director

Center for Child, Family & Community Partnerships

Mary Walsh, Director

Center for Christian-Jewish Learning

James W. Bernauer, S.J., Director

Center for Corporate Citizenship

Center for East Europe, Russia and Asia

Roberta Manning, Co-Director; Cynthia Simmons, Co-Director

Center for Financial Literacy

Alicia H. Munnell, Director

Center for Human Rights & International Justice

David Hollenbach, S.J., Director

Center for International Higher Education

PJ/ mxacy

UNIVERSITY CENTERS 2009-2010

Boston College Neighborhood Center

Maria DiChiappari, Director

Career Center

Theresa Harrigan, Director

Center for Ignatian Spirituality

Michael Boughton, S.J., Director

Church in the 21st Century Center

John McGinty, Interim Director

Theatre Arts Center

Howard Enoch, Director

Volunteer & Service Learning Center

Daniel Ponsetto, Director

Women's Resource Center

Sheila McMahon, Director

**Board
of
Trustees**

W.P. Leahy, S.J.

J. D. Monan, S.J.

R. Newton

E. DeFilippo

J. McIntyre

M. DeLong

J. Husson

C. Garza

P. Keating

W. Neenan, S.J.

J. Herlihy, Esq.

K. Shea

T. Keady

J. Appleyard, S.J.

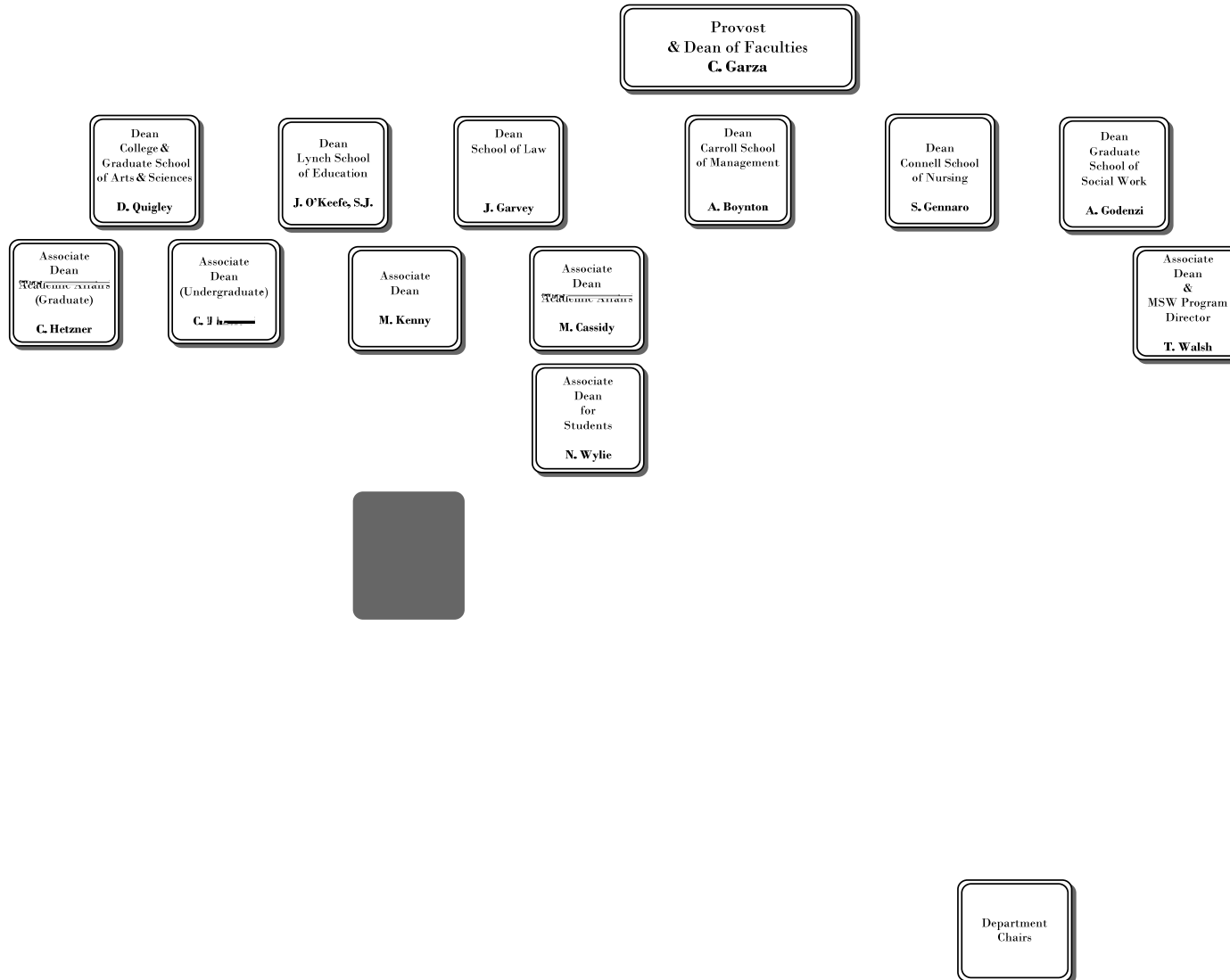
J. McGinty

T. O'Connor

Community

M. DiChiappari





L. Sullivan

P. Rombalski

P. McKenzie

M. Moore

D. Bourque

R. Lewis

R. Young

PROFESSIONAL, ADMINISTRATIVE, AND SUPPORT STAFF PERSONNEL By Gender, Fall 2009

¹ Includes academic administration, Student Services, and all library professional administrative staff.

² Includes Financial & Business Affairs, Bookstore, Boston College Police, Bureau of Conferences, and Dining Services.

³ Includes University Advancement and Alumni Relations.

⁴ Includes Office of the President, Office of the Senior Vice President, Mission & Ministry, Boston College Neighborhood Center, Marketing Communications, Public Affairs, Governmental & Community Affairs, University General Counsel, University Historian, University Secretary, and all executives.

⁵ Includes Emergency Management & Preparedness and Institutional Research, Planning & Assessment.

Note: Full-time Equivalent (FTE) of positions = hours per week compared to the full time standard for the respective position type. The above figures represent all permanent positions funded by the University as of October 9, 2009. Restricted funded positions are not included. Positi

PROFESSIONAL, ADMINISTRATIVE, AND SUPPORT STAFF PERSONNEL By VP Area, Fall 2009

¹ Includes academic administration, Student Services, and all library professional administrative staff.

² Includes Financial & Business Affairs, Bookstore, Boston College Police, Bureau of Conferences, and Dining Services.

³ Includes University Advancement and Alumni Relations.

⁴ Includes Office of the President, Office of the Senior Vice President, Mission & Ministry, Boston College Neighborhood Center, Marketing Communications, Public Affairs, Governmental & Community Affairs, University General Counsel, University Historian, University Secretary, and all executives.

⁵ Includes Emergency Management & Preparedness and Institutional Research, Planning & Assessment.

Note: FTE of positions = hours per week compared to the full time standard for the respective position type. The above figures

FACULTY BY SCHOOL AND GENDER 2008-2009

School	Women		Men		Total	
	No.	%	No.	%	No.	%
Arts & Sciences	128	30%	299	70%	427	100%
Education	25	50%	25	50%	50	100%
Law	19	41%	27	59%	46	100%
Management	31	35%	58	65%	89	100%
Nursing	44	96%	2	4%	46	100%
Social Work	12	52%	11	48%	23	100%
Theology & Ministry	8	30%	19	70%	27	100%
Total	267	38%	441	62%	708	100%

Note: Includes all full-time faculty members who are not on leave.
Source: Office of the Provost and Dean of Faculties

FACULTY BY SCHOOL AND TENURE STATUS 2008-2009

School	Tenured Faculty		Tenure Track Faculty		Non-Tenure Track Faculty		Total	
	No.	%	No.	%	No.	%	No.	%
Arts & Sciences	274	64%	71	17%	82	19%	427	100%
Education	28	56%	12	24%	10	20%	50	100%
Law	32	70%	5	11%	9	20%	46	100%
Management	51	57%	13	15%	25	28%	89	100%
Nursing	23	50%	13	28%	10	22%	46	100%
Social Work	15	65%	5	22%	3	13%	23	100%
Theology & Ministry	19	70%	7	26%	1	4%	27	100%
Total	442	62%	126	18%	140	20%	708	100%

Note: Includes all full-time faculty members who are not on leave.
Source: Office of the Provost and Dean of Faculties

FACULTY BY HIGHEST DEGREE EARNED AND GENDER 2008-2009

Degree	Women		Men		Total	
	No.	%	No.	%	No.	%
Doctorate	257	96%	436	99%	693	98%
Master's	10	4%	5	1%	15	2%
Total	267	100%	441	100%	708	100%

Note: Includes all full-time faculty members who are not on leave.
Source: Office of the Provost and Dean of Faculties

**FACULTY BY RANK AND GENDER
2008-2009**

Note: Includes all full-time faculty members who are not on leave.
Source: Office of the Provost and Dean of Faculties

**FACULTY BY HIGHEST DEGREE EARNED AND RANK
2008-2009**

FULL-TIME FACULTY COMPENSATION Average by Rank

Year	Professor	Associate	Assistant
1999-00	\$122,387	\$88,815	\$73,542
2000-01	\$131		

Note: Includes salary and fringe benefits.
Source: Office of the Provost and Dean of Faculties

FULL-TIME FACULTY COMPENSATION BY RANK Boston College Average Compared to AAUP Category I¹ (9-Month Equivalent), 2008-2009

¹ AAUP Category I are those institutions classified as doctoral universities by the American Association of University Professors (AAUP).
Note: Includes salary and fringe benefits. Sub-categories are defined as: New England includes institutions located in VT, ME, NH, MA, RI, CT; Church-related are those private institutions identifying themselves as religiously affiliated; All-combined includes all Category I institutions participating in the annual AAUP Faculty Compensation Survey.
Source: Office of the Provost and Dean of Faculties; AAUP *Annual Report on the Economic Status of the Profession*

STUDENTS

FULL-TIME FRESHMAN ENROLLMENT By Year and Gender

Fall	Men	Women	Total
2000	1,114	1,132	2,246
2001	940	1,163	2,103
2002	1,150	1,165	2,315
2003	1,055	1,153	2,208
2004	1,090	1,219	2,309
2005	1,097	1,077	2,174
2006	1,074	1,210	2,284
2007	1,148	1,143	2,291
2008	1,043	1,124	2,167
2009	1,077	1,095	2,172

Source: Office of Undergraduate Admission

FRESHMAN ADMISSION PROFILE Middle 50% Range of SAT Scores

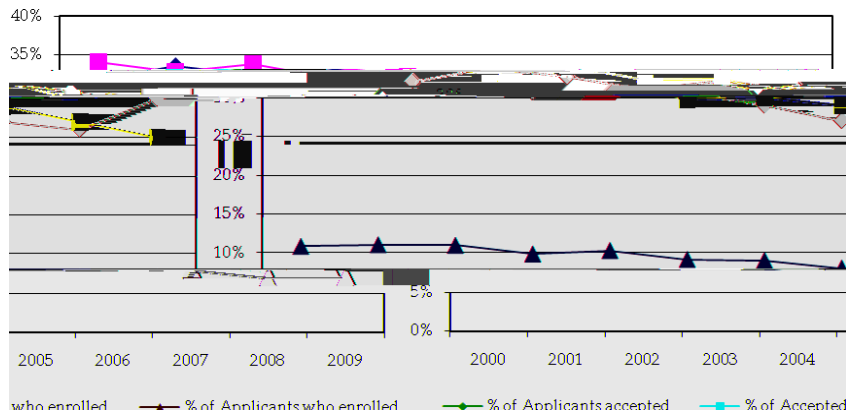
Class	Verbal	Math	Composite
2004	600 - 690	620 - 700	1230 - 1370
2005	600 - 690	620 - 700	1240 - 1380
2006	600 - 690	620 - 710	1250 - 1390
2007	600 - 690	630 - 710	1260 - 1390
2008	610 - 700	630 - 710	1250 - 1400
2009	610 - 700	640 - 720	1260 - 1410

Note: Starting with the Class of 2010, two separate score ranges "Critical Reading" and "Writing" have replaced the single range for the Verbal Score. The new composite score is the combination of three scores.

Class	Critical Reading	Writing	Math	Composite
2010	610 - 700	620 - 710	640 - 720	1900 - 2100
2011	610 - 710	620 - 710	630 - 720	1910 - 2110
2012	610 - 700	620 - 730	640 - 730	1900 - 2120
2013	610 - 700	630 - 720	640 - 730	1920 - 2130

Source: Office of Undergraduate Admission

FRESHMAN APPLICATIONS, ACCEPTANCES, AND ENROLLMENT By Year



Fall	Applications	Acceptances	Acceptances as a % of Applications	Total Enrollment	Enrollment as a % of Acceptances	Enrollment as a % of Applications
2000	20,743	6,587	32%	2,246	34%	11%
2001	19,059	6,401	34%	2,103	33%	11%
2002	21,133	6,850	32%	2,315	34%	11%
2003	22,424	6,896	31%	2,208	32%	10%
2004	22,451	7,178	32%	2,309	32%	10%
2005	23,823	7,302	31%	2,174	30%	9%
2006	26,584	7,736	29%	2,284	30%	9%
2007	28,850	7,869	27%	2,291	29%	8%
2008	30,845	8,093	26%	2,167	27%	7%
2009	29,290	8,805	30%	2,172	25%	7%

Note: Freshman enrollment reported above is based on deposits received from students accepting the offer of admission on or before the deadline set by the Committee on Admission. Withdrawals may occur during the summer months and the first two weeks in September.
Source: Office of Undergraduate Admission

APPLICATIONS, ACCEPTANCES, AND ENROLLMENT – CLASS OF 2013

Geographic Distribution

	Applications	Acceptances	Enrollment		Applications	Acceptances	Enrollment
Alabama	37	12	2	Nevada	58	16	3
Alaska	11	3	2	New Hampshire	438	98	34
Arizona	174	47	12	New Jersey	2,740	824	224
Arkansas	22	11	2	New Mexico	42	10	0
California	3,371	880	135	New York	4,052	1,319	329
Colorado	267	75	21	North Carolina	221	76	8
Connecticut	1,527	437	147	North Dakota	5	3	1
Delaware	58	21	4	Ohio	495	175	39
District of Columbia	59	15	4	Oklahoma	49	20	3
Florida	1,169	444	73	Oregon	129	51	14

69-1879 0 TdS((2)o)14(u)17(tt)37hd(1)4(0)

Note: Application, Acceptance, and Enrollment totals are as of May 4, 2009. The Class of 2013 includes students from 47 states, the District of Columbia, Puerto Rico, and 33 foreign countries.
 Source: Office of Undergraduate Admission

GEOGRAPHIC DISTRIBUTION OF UNDERGRADUATE STUDENTS By State

State	2005	2006	2007	2008	2009	State	2005	2006	2007	2008	2009
Alabama	10	11	9	10	9	Nevada	10	6	9	6	8
Alaska	5	5	4	3	2	New Hampshire	165	171	155	152	152
Arizona	35	33	38	38	46	New Jersey	979	954	920	903	879
Arkansas	4	4	2	2	2	New Mexico	8	10	12	11	9
California	427	437	475	477	512	New York	1,450	1,427	1,428	1,418	1,397
Colorado	57	52	56	47	63	North Carolina	44	45	49	47	45
Connecticut	644	648	647	638	692	North Dakota	2	1	3	3	3
Delaware	17	20	17	16	14	Ohio	138	140	148	157	141
Washington, DC	33	29	27	26	16	Oklahoma	7	9	7	9	9
Florida	260	247	270	242	265	Oregon	26	26	36	32	29
Georgia	43	49	51	48	55	Pennsylvania	304	306	294	303	321
Hawaii	20	27	28	30	26	Rhode Island	189	176	167	155	159
Idaho	2	8	9	6	5	South Carolina	12	16	12	12	10
Illinois	213	243	253	276	287	South Dakota	0	1	2	1	1
Indiana	22	18	19	17	19	Tennessee	17	19	20	27	22
Iowa	9	11	16	15	16	Texas	134	125	123	119	126
Kansas	23	24	21	23	21	Utah	13	11	8	6	7
Kentucky	6	6	8	8	10	Vermont	44	39	43	42	42
Louisiana	14	17	15	21	24	Virginia	91	99	106	115	107
Maine	96	91	94	93	100	Washington	67	67	75	71	65
Maryland	229	230	236	211	214	West Virginia	2	4	3	3	2
Massachusetts	2,560	2,559	2,588	2,572	2,536						

¹ Includes Americans living abroad and those living in other U.S. territories.
Source: Office of Student Services

UNDERGRADUATE, GRADUATE, AND PROFESSIONAL ENROLLMENT By School, Gender, and Status, Fall 2005 – Fall 2009

	A&S	Ed.	Mgt.	Nurs.	Total	Graduate & Professional								Univ.		
						Adv.St.	GA&S	GEd.	GMgt.	GNurs.	GSSW	Law	STM	Total	GAdv.St.	Total
Fall 2005																
Full-Time	5,908	753	2,000	358	9,019	414	363	425	349	105	390	817	-	2,449	13	11,895
Part-Time	0	0	0	0	0	401	736	608	560	96	117	2	-	2,119	155	2,675
Men	2,904	126	1,269	15	4,314	409	573	251	569	20	57	414	-	1,884	65	6,672
Women	3,004	627	731	343	4,705	406	526	782	340	181	450	405	-	2,684	103	7,898
Total	5,908	753	2,000	358	9,019	815	1,099	1,033	909	201	507	819	-	4,568	168	14,570
Fall 2006																
Full-Time	5,919	727	1,997	376	9,019	313	343	388	307	109	411	789	-	2,347	36	11,715
Part-Time	0	0	0	1	1	416	728	586	576	112	110	1	-	2,113	136	2,666
Men	2,867	116	1,291	11	4,285	374	572	231	557	18	54	434	-	1,866	63	6,588
Women	3,052	611	706	366	4,735	355	499	743	326	203	467	356	-	2,594	109	7,793
Total	5,919	727	1,997	377	9,020	729	1,071	974	883	221	521	790	-	4,460	172	14,381
Fall 2007																
Full-Time	6,041	683	1,970	386	9,080	302	355	363	337	125	405	793	-	2,378	28	11,788
Part-Time	0	0	0	1	1	370	735	584	572	126	104	2	-	2,123	113	2,607
Men	2,968	115	1,284	13	4,380	332	574	244	608	14	68	440	-	1,948	56	6,716
Women	3,073	568	686	374	4,701	340	516	703	301	237	441	355	-	2,553	85	7,679
Total	6,041	683	1,970	387	9,081	672	1,090	947	909	251	509	795	-	4,501	141	14,395
Fall 2008																
Full-Time	6,058	672	1,948	382	9,060	318	303	355	353	144	390	815	153	2,513	27	11,918
Part-Time	0	0	0	0	0	402	656	584	552	157	102	1	144	2,196	107	2,705
Men	2,962	110	1,286	11	4,369	380	521	263	601	15	62	438	169	2,069	49	6,867
Women	3,096	562	662	371	4,691	340	438	676	304	286	430	378	128	2,640	85	7,756
Total	6,058	672	1,948	382	9,060	720	959	939	905	301	492	816	297	4,709	134	14,623
Fall 2009																
Full-Time	6,137	665	1,970	399	9,171	310	265	417	356	183	408	824	159	2,612	30	12,123
Part-Time	0	0	0	0	0	355	647	604	533	147	118	3	151	2,203	115	2,673
Men	2,969	105	1,323	13	4,410	357	497	284	584	21	64	436	175	2,061	50	6,878
Women	3,168	560	647	386	4,761	308	415	737	305	309	462	391	135	2,754	95	7,918
Total	6,137	665	1,970	399	9,171	665	912	1,021	889	330	526	827	310	4,815	145	14,796

Source: Office of Student Services

AHANA & INTERNATIONAL ENROLLMENT Undergraduate Day Schools, Fall 2009

	Men	Women	Total	Percent ¹
Black or African-American	185	283	468	5.4%
Native American	9	16	25	0.3%
Asian	463	440	903	10.4%
Hispanic	295	432	727	8.3%
AHANA Undergraduate	952	1,171	2,123	24.4%
International Students ²	130	134	264	2.9%

¹ AHANA percentages are based on U.S. citizen or permanent resident students who report their race/ethnicity identification. In fall of 2009, 454 students (243 men, 211 women) did not report race or ethnicity.

² International students include nonresident aliens of all racial and ethnic groups including Caucasian.

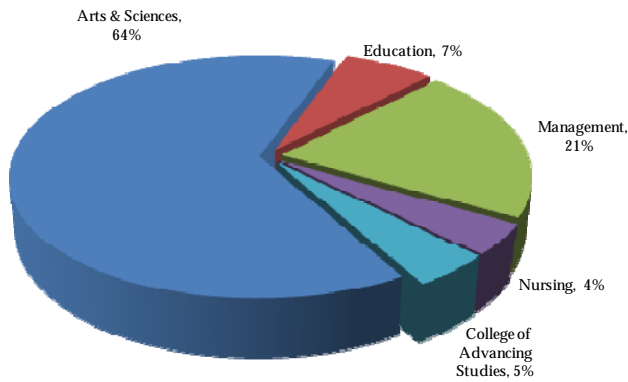
Source: Office of Student Services

FULL-TIME EQUIVALENT ENROLLMENT By School, Fall 2000 - Fall 2009

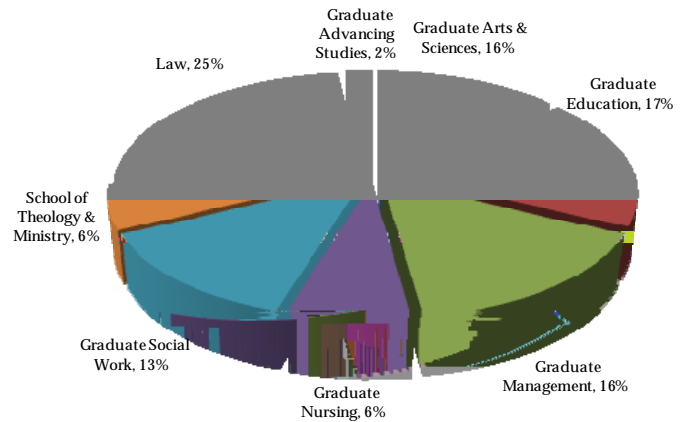
	2000	2001	2002	2003	2004	2005	2006	2007	2008	2009
Undergraduate Students										
College of Arts & Sciences	5,741	5,850	5,895	5,767	5,967	5,908	5,919	6,041	6,058	6,137
Lynch School of Education	785	772	756	767	786	753	727	683	672	665
Carroll School of Management	2,187	2,148	2,045	2,048	1,977	2,000	1,997	1,970	1,948	1,970
Connell School of Nursing	216	230	220	269	329	358	376	386	382	399
Total Day Students	8,929	9,000	8,916	8,851	9,059	9,019	9,019	9,080	9,060	9,171
College of Advancing Studies	464	440	423	444	428	548	452	425	452	428
Total Undergraduate	9,393	9,440	9,339	9,295	9,487	9,567	9,471	9,505	9,512	9,599
Graduate & Professional										
Graduate Arts & Sciences	539	553	561	558	583	608	586	600	522	481
Graduate Education	621	532	583	633	628	628	583	558	550	618
Graduate Management	481	511	506	559	560	536	499	528	537	534
Law School	805	813	806	811	796	818	789	793	815	825
Graduate Nursing	112	106	122	148	153	137	146	167	196	232
Graduate Social Work	360	348	346	415	410	429	448	440	424	447
School of Theology & Ministry	-	-	-	-	-	-	-	-	201	209
Graduate Advancing Studies	64	60	64	61	65	65	81	66	63	68
Total Graduate & Professional	2,982	2,923	2,988	3,185	3,195	3,221	3,132	3,152	3,308	3,414
Total University	12,375	12,363	12,327	12,480	12,682	12,788	12,603	12,657	12,820	13,013

Note: FTE student = three part-time students. Calculations are rounded to the nearest whole number.
Source: Office of Student Services

FULL-TIME EQUIVALENT ENROLLMENT Undergraduate, Fall 2009



FULL-TIME EQUIVALENT ENROLLMENT Graduate, Fall 2009



UNDERGRADUATES STUDYING ABROAD By Year

	Fall Semester			Spring Semester			Annual Average		
	University Programs	External Programs	Total All Programs	University Programs	External Programs	Total All Programs	University Programs	External Programs	Total All Programs
2004-2005	274	41	315	362	87	449	318.0	64.0	382.0
2005-2006	358	46	404	378	91	469	368.0	68.5	436.5
2006-2007	285	40	325	385	84	469	335.0	62.0	397.0
2007-2008	281	83	364	352	164	516	316.5	123.5	440.0
2008-2009	310	47	357	380	138	518	345.0	92.5	437.5

Source: Office of Student Services

SUMMER SESSION ENROLLMENT By Year

Summer	2000	2001	2002	2003	2004	2005	2006	2007	2008	2009
Undergraduate	1,929	1,878	1,881	1,706	1,727	1,685	1,708	1,710	1,659	1,611
Graduate/Professional	2,031	1,751	1,725	2,037	2,060	2,324	2,170	2,177	2,376	2,102
Total	3,960	3,629	3,606	3,743	3,787	4,009	3,878	3,887	4,035	3,713

Source: Office of Student Services

GRADUATE ENROLLMENT By Degree & Program, Fall 2009

	Doctorate	Master's/Professional	Licentiate	Other	Non-Degree
Graduate Arts & Sciences					
Biology	44	2	-	-	-
Chemistry	109	1	-	-	-
Economics	78	-	-	-	-
English	28	65	-	-	2
Geology	-	22	-	-	-
Geophysics	-	4	-	-	-
Greek	-	1	-	-	-
History	49	30	-	-	2
Latin	-	0	-	-	-
Latin And Greek	-	5	-	-	-
Linguistics	-	6	-	-	-
Mathematics	-	10	-	-	1
Philosophy	51	75	-	-	3
Physics	47	2	-	-	-
Political Science	32	18	-	-	-
Psychology	18	3	-	-	2
- 2					

Note: Doctorate includes Ed.D., Ph.D., D.S.W., S.T.D.; Master's/Professional includes M.A., M.A.T., M.B.A., M.Div., M.Ed., LL.M., M.S., M.S.T., M.S.W., M.T.S., Th.M., J.D.; Other includes C.A.E.S., C.A.G.S.; Licentiate includes Licentiate in Sacred Theology (S.T.L.); Non-degree includes Non-degree & special students. Dual degrees are listed by current program of enrollment.
Source: Institutional Research, Planning & Assessment

UNDERGRADUATE MAJORS By School, 2000-2009

	2000	2001	2002	2003	2004	2005	2006	2007	2008	2009
Arts & Sciences										
Art History	32	45	42	41	60	55	66	58	44	45
Biochemistry	83	82	95	118	125	122	127	140	126	126
Biology	481	443	465	494	581	650	641	662	662	681
Chemistry	84	89	102	98	86	75	97	118	116	136
Classics	11	21	17	26	33	32	37	23	22	28
Communication	865	945	963	925	943	953	945	826	843	944
Computer Science	200	189	139	108	93	68	57	47	49	56
Economics	382	374	398	417	411	445	472	551	643	667
English	863	845	770	758	814	814	770	720	652	647
Film Studies	10	32	46	45	50	51	51	41	34	53
French	56	47	49	46	34	42	43	35	42	53
Geology/Geophysics	52	42	30	29	31	33	39	44	58	78
German	10	3	7	12	16	26	27	18	19	14
History	451	465	530	560	595	627	618	588	564	514
Independent	5	3	1	-	-	-	-	-	1	1
International Studies	45	31	32	35	57	82	78	96	132	132
Ecology	1	/	8	9	(4	5	1	5	7

Note: This table includes each declared major. Students with double or triple majors are therefore counted in each enrolled major. College of Advancing Studies students are not included in this table.

" - " indicates a particular major was not offered for that year.

Source: Office of Student Services

UNDERGRADUATE MINORS By School, 2005-2009

¹ 2009-10 is the first year that all minors of LSOE students are listed under the Education heading. An asterisk, *, denotes the years in which LSOE students minoring in A&S or CSOM subjects would have

MOST POPULAR UNDERGRADUATE MAJORS By Year

2006		2007		2008		2009	
Communication	945	Finance	855	Communication	843	Communication	944
Finance	805	Communication	826	Finance	830	Economics ¹	806
Political Science	777	English	720	Economics ¹	776	Finance	772
English	770	Political Science	713	Political Science	672	Political Science	714
Biology	641	Economics ¹	681	Biology	662	Biology	681
History	618	Biology	662	English	652	English	647
Economics ¹	610	History	588	History	564	History	514
Psychology	450	Psychology	485	Psychology	472	Psychology	496
Marketing	386	Nursing	387	Marketing			

¹ Data for Economics majors reflect enrollments in both A&S and CSOM.
Source: Office of Student Services

DISCIPLINES WITH LARGEST PERCENT INCREASE IN UNDERGRADUATE MAJORS 2000-2009

Note: Among those disciplines with at least ten or more students enrolled in a major.
Source: Office of Student Services

MOST POPULAR UNDERGRADUATE MINORS By Year

Note: Does not include Pre-Dental, Pre-Law, Pre-Medical, or Pre-Veterinary programs of study.
Source: Office of Student Services

INTERNATIONAL STUDENTS & SCHOLARS By School, 2009-2010

Arts & Sciences	126
Education	8
Management	109
Nursing	2
College of Advancing Studies	1
Exchange Students - Undergraduate	<u>178</u>
Total Undergraduate	424

Graduate Arts & Sciences	210
Graduate Education	77
Graduate Management	82
Graduate Nursing	6
Graduate Social Work	17
Law	22
School of Theology & Ministry	52
Graduate Advancing Studies	16
Graduate Exchange Students	<u>11</u>
Total Graduate/Professional	493

Total Enrolled Students	917
Practical Training ¹	105
Faculty and Research Scholars	<u>135</u>
Total	1157

INTERNATIONAL STUDENTS & SCHOLARS By Class or Program, 2009-2010

Freshmen	75
Sophomores	75
Juniors	51
Seniors	44
Undergraduate Exchange Students	178
Visiting Students	<u>1</u>
Total Undergraduate	424

Graduate/Professional	
M.A.	55
M.B.A.	40
M.Ed.	20
M.S.	50
M.S.W.	14
Th.M.	3
M.Div.	6
C.A.E.S.	2
S.T.L.	24
Ph.D.	239
J.D.	12
LL.M.	10
S.T.D.	7
Graduate Visiting & Exchange Students	<u>11</u>
Total Graduate/Professional	493

Practical Training ¹	105
Faculty and Research Scholars	<u>135</u>
Total	1157

¹ Practical Training is employment in a student's field of study for a 12-18 month period following completion of studies.
 Note: These figures do not include all students, faculty, and scholars who will arrive in spring 2010 which would add approximately 30-40 to the total international population for 2009-2010. These figures include both degree and non-degree international students.
 Source: Office of International Students and Scholars

INTERNATIONAL STUDENTS & SCHOLARS By Gender and Status, 2009-2010

	Men	Women	Total
Undergraduate	181	243	424
Graduate	270	223	493
Practical Training ¹	37	68	105
Faculty and Research Scholars	88	47	135
Total	576	581	1157

¹ Practical Training is employment in a student's field of study for a 12-18 month period following completion of studies.
 Note: These figures include both degree and non-degree international students.
 Source: Office of International Students and Scholars

UNDERGRADUATE AND GRADUATE INTERNATIONAL STUDENTS By Country, 2009-2010

	Under-graduate	Graduate/ Professional	Total		Under-graduate	Graduate/ Professional	Total
Argentina	8	-	8	Korea South	72	37	109
Armenia	-	3	3	Kuwait	2	-	2
Australia	28	12	40	Lebanon	2	-	2
Bahrain	3	-	3	Lithuania	-	1	1
Belgium	1	1	2	Malaysia	1	-	1
Benin	-	1	1	Malta	-	1	1
Bolivia	-	1	1	Mexico	3	11	14
Brazil	5	8	13	Morocco	1	-	1
Bulgaria	2	10	12	Nepal	-	10	10
Burkina Faso	-	1	1	Netherlands	10	-	10
Burundi	-	1	1	Netherlands Antilles	1	-	1
Canada	26	23	49	New Zealand	1	2	3
Chile	5	8	13	Nigeria	1	1	2
China	40	117	157	Norway	3	-	3
Colombia	1	4	5	Pakistan	-	1	1
Costa Rica	1	-	1	Panama	2	-	2
Czech Republic	1	-	1	Paraguay	-	1	1
Dem Rep of the Congo	-	4	4	Peru	2	1	3
Denmark	6	-	6	Philippines	5	10	15
Dominica	-	2	2	Poland	1	-	1
Dominican Republic	5	2	7	Portugal	1	2	3
Ecuador	6	2	8	Total	406	514	920
T	3	J	0		-	-	7

¹ Hong Kong is classified as a country for statistical reporting by the Institute of International Education.
Note: These figures include both degree and non-degree international students.
Source: Office of International Students and Scholars

UNDERGRADUATE AND GRADUATE DEGREES CONFERRED By Degree and Gender

	2004-2005			2005-2006			2006-2007			2007-2008			2008-2009		
	Men	Women	Total	Men	Women	Total	Men	Women	Total	Men	Women	Total	Men	Women	Total
Arts & Sciences															
A.B.				568	718	1,286	585	607	1,192	578	680	1,258	558	672	1,230
B.S.				84	81	165	102	86	188	97	78	175	107	102	209
Total Arts & Sciences				652	799	1,451	687	693	1,380	675	758	1,433	665	774	1,439
Education - A.B.				35	162	197	25	160	185	32	174	206	24	170	194
Management - B.S.				321	212	533	295	190	485	325	209	534	330	176	506
Nursing - B.S.				2	58	60	3	77	80	2	85	87	3	94	97
Day Degrees Conferred							1,010	1,231	2,241	1,010	1,120	2,130	1,034	1,226	2,260
Advancing Studies															
A.B.	37	63	100	49	50	99	47	43	90	41	42	83	33	43	76
B.S.	-	-	-	-	-	-	-	-	-	-	-	-	2	-	2
Total Advancing Studies	-	-	-	-	-	-	2								

Note: August, December, and May graduations combined.
Source: Office of Student Services

UNDERGRADUATE DEGREES CONFERRED By Degree and Number of Majors

2004-2005	2005-2006	2006-2007	2007-2008	2008-2009
-----------	-----------	-----------	-----------	-----------

Note: August, December, and May graduations combined.
Source: Office of Student Services

UNDERGRADUATE DEGREES CONFERRED By School and Major

			Ed	Mgt	Nurs				Ed	Mgt	Nurs				Ed	Mgt	Nurs	
	A.B.	B.S.	A.B.	B.S.	B.S.	Total	A.B.	B.S.	A.B.	B.S.	B.S.	Total	A.B.	B.S.	A.B.	B.S.	B.S.	Total
Accounting																		

¹ Woods College of Advancing Studies majors are not included in this total.
Note: Double and triple majors counted by first major. August, December, and May graduations combined.
Source: Office of Student Services

UNDERGRADUATE DEGREES CONFERRED
By Number of Majors, 2008-2009

UNDERGRADUATE STUDENT GRADUATION AND RETENTION RATES Freshman Matriculants

Semester of Entrance	Transfer Rate ¹	Graduation Rate ²
Fall 2002	7%	91%
Fall 2001	7%	91%
Fall 2000	7%	91%
Fall 1999	5%	91%
Fall 1998	4%	89%

¹ Calculated based on those who transfer out in good standing. To be in good standing, as defined by the Office of Student Services, a student must ordinarily maintain a cumulative average as mandated by their college and must not fall more than two courses behind the total number of courses a student of their status is expected to have completed. Any student who is permitted by the deans to continue enrollment in a full-time undergraduate program is considered to be in good standing.

² Calculated based on graduation rate at 150% of normal time (6 years).

Source: Institutional Research, Planning & Assessment

COMPETITIVE FELLOWSHIPS AND AWARDS Received by Undergraduates, AY1999-2009

Award

ALUMNI & ADVANCEMENT

ALUMNI GEOGRAPHIC DISTRIBUTION Fall 2009

Alabama	176	Nevada	211
Alaska	100	New Hampshire	3,806
Arizona	800	New Jersey	6,716
Arkansas	65	New Mexico	241
California	7,413	New York	13,207
Colorado	1,162	North Carolina	1,502
Connecticut	7,723	North Dakota	19
Delaware	245	Ohio	1,542
District of Columbia	1,133	Oklahoma	116
Florida	5,024	Oregon	501
Georgia	1,347	Pennsylvania	3,460
Guam	17	Puerto Rico	443
Hawaii	312	Rhode Island	2,990
Idaho	87	South Carolina	494
Illinois	2,696	South Dakota	37
Indiana	334	Tennessee	342
Iowa	140	Texas	1,913
Kansas	166	Utah	152
Kentucky	227	Vermont	823
Louisiana	275	Virgin Islands	42

Note: Data as of September 2009.
Source: Information Services, University Advancement

ALUMNI GEOGRAPHIC DISTRIBUTION SUMMARY

LIVING ALUMNI

By Primary School and Class, Fall 2009

Class	A&S	Ed.	Mgt.	Nursing	Newton College	Adv. Stds. ¹	Grad. A&S	Grad. Mgt.	Grad. Ed. ²	Grad. Nurs. ²	Grad. Adv. Stds.	Social Work	Law	STM ³	Hon. Deg.	EX Alum. ⁴	Total
1920	1	-	-	-	-	-	-	-	-	-	-	-	-	-	-	-	1
1923	-	-	-	-	-	-	-	-	-	-	-	-	-	-	-	1	1
1925	1	-	-	-	-	-	-	-	-	-	-	-	-	-	-	-	1
1926	1	-	-	-	-	-	-	-	-	-	-	-	-	1	-	-	2
1927	1	-	-	-	-	-	3	-	-	-	-	-	-	3	-	-	7
1928	1	-	-	-	-	-	-	-	-	-	-	-	-	1	-	1	3
1929	2	-	-	-	-	-	-	-	-	-	-	-	-	-	-	1	3
1930	2	-	-	-	-	-	3	-	-	-	-	-	-	-	-	-	5
1931	3	-	-	-	-	1	1	-	-	-	-	-	-	-	-	3	8
1932	5	-	-	-	-	-	-	-	2	-	-	-	-	-	-	4	11
1933	8	-	-	-	-	1	1	-	1	-	-	-	-	1	-	1	13
1934	8	-	-	-	-	4	4	-	-	-	-	-	1	-	-	5	22
1935	9	-	-	-	-	5	6	-	1	-	-	-	3	1	-	6	31
1936	14	-	-	-	-	6	4	-	1	-	-	-	-	1	1	2	29
1937	23	-	-	-	-	6	2	-	-	-	-	-	5	1	1	5	43
1938	30	-	-	-	-	5	3	-	1	-	-	1	2	1	-	5	48
1939	32	-	-	-	-	7	5	-	1	-	-	0	4	-	-	7	56
1940	47	-	-	-	-	4	3	-	-	-	-	1	1	-	-	6	62
1941	47	-	-	-	-	11	3	-	-	1	-	2	2	-	-	2	68
1942	54	-	7	-	-	4	5	-	1	-	-	2	0	-	-	10	83
1943	64	-	11	-	-	10	3	-	-	-	-	4	6	-	-	10	108
1944	46	-	16	-	-	2	1	-	-	-	-	3	2	2	-	19	91
1945	48	-	10	-	-	6	1	-	1	-	-	2	1	3	-	57	129
1946	9	-	-	-	-	12	6	-	1	-	-	6	2	5	-	19	60
1947	49	-	7	-	-	6	10	-	5	-	-	12	6	7	-	18	120
1948	74	-	33	-	-	10	10	-	2	-	-	12	11	6	-	1	159
1949	198	-	37	10	-	21	19	-	1	-	-	11	19	10	-	6	332
1950	435	-	138	16	22	13	23	-	4	-	-	14	34	11	-	11	721
1951	430	-	190	20	22	25	31	-	12	-	-	12	36	2	1	21	802
1952	299	-	188	46	25	26	25	-	8	-	-	13	42	11	-	22	705
1953	265	-	160	48	31	28	36	-	23	-	-	21	26	6	5	21	670
1954	229	-	155	75	17	32	46	-	29	-	-	21	30	10	4	54	702
1955	204	-	151	95	34	47	50	-	23	-	-	18	26	13	2	19	682
1956	240	117	211	80	33	49	47	-	24	-	-	19	36	17	4	41	918
1957	254	86	196	89	40	40	46	-	27	-	-	16	37	12	2	47	892
1958	295	111	254	139	53	47	50	-	42	1	-	12	35	15	5	76	1,135
1959	308	101	265	122	69	51	46	-	30	5	-	21	44	15	1	70	1,148
1960	263	112	291	161	90	98	53	1	85	4	-	24	41	28	3	22	1,276
1961	242	73	240	131	93	50	66	6	40	9	-	28	61	34	2	22	1,097
1962	291	113	205	161	117	68	40	16	30	4	-	30	74	21	4	38	1,212
1963	424	156	289	145	130	50	110	25	81	12	-	24	64	24	2	28	1,564
1964	428	167	309	119	178	58	98	19	64	13	-	41	67	26	4	45	1,636
1965	393	170	321	136	126	64	108	28	82	6	-	41	90	39	2	42	1,648

LIVING ALUMNI

By Gender and Class, Fall 2009

Class	Women	Men	Total	Class	Women	Men	Total
1920	-	1	1	1966	672	1,097	1,769
1923	-	1	1	1967	711	1,235	1,946
1925	-	1	1	1968	772	1,362	2,134
1926	-	2	2	1969	838	1,400	2,238
1927	3	4	7	1970	897	1,314	2,211
1928	-	3	3	1971	951	1,368	2,319
1929	-	3	3	1972	1,045	1,521	2,566
1930	3	2	5	1973	1,055	1,391	2,446
1931	2	6	8	1974	1,320	1,506	2,826
1932	1	10	11	1975	1,548	1,325	2,873
1933	2	11	13	1976	1,645	1,547	3,192
1934	7	15	22	1977	1,514	1,265	2,779
1935	11	20	31	1978	1,527	1,464	2,991
1936	9	20	29	1979	1,642	1,346	2,988
1937	4	39	43	1980	1,691	1,349	3,040
1938	7	41	48	1981	1,739	1,393	3,132
1939	11	45	56	1982	1,845	1,347	3,192
1940	6	56	62	1983	1,934	1,246	3,180
1941	10	58	68	1984	1,818	1,338	3,156
1942	8	75	83	1985	1,815	1,239	3,054
1943	13	95	108	1986	1,870	1,326	3,196
1944	6	85	91	1987	1,934	1,273	3,207
1945	10	119	129	1988	1,888	1,344	3,232
1946	18	42	60	1989	1,959	1,359	3,318
1947	27	93	120	1990	1,909	1,420	3,329
1948	23	136	159	1991	1,965	1,465	3,430
1949	47	285	332	1992	2,101	1,700	3,801
1950	76	645	721	1993	2,028	1,468	3,496
1951	94	708	802	1994	1,942	1,546	3,488
1952	110	593	703	1995	1,996	1,520	3,516
1953	145	525	670	1996	1,940	1,632	3,572
1954	170	532	702	1997	1,995	1,631	3,626
1955	205	475	680	1998	2,058	1,588	3,646
1956	284	634	918	1999	1,904	1,501	3,405
1957	250	640	890	2000	2,094	1,645	3,739
1958	373	760	1,133	2001	1,951	1,585	3,536
1959	341	805	1,146	2002	1,916	1,596	3,512
1960	475	799	1,274	2003	1,977	1,619	3,596
1961	387	708	1,095	2004	1,942	1,589	3,531
1962	472	738	1,210	2005	1,850	1,483	3,333
1963	577	987	1,564	2006	2,065	1,658	3,723
1964	605	1,031	1,636	2007	2,188	1,596	3,784
1965	554	1,094	1,648	2008	2,069	1,607	3,676
				2009	1,766	1,565	3,331
				Total	79,632	76,711	156,343

Note: Data as of September 2009.
Source: Information Services, University Advancement

GIFTS TO THE UNIVERSITY
Total Private Gift Support

Note: Gifts represent cash received during

ALUMNI DONORS By Primary School and Class, 2008-2009

Class	A&S	Ed.	Mgt.	Nursing	Newton College	Adv. Stds. ¹	Grad. A&S	Grad. Mgt.	Grad. Ed. ²	Grad. Nurs. ²	Grad. Adv. Stds.	Social Work	Law	STM ³	Hon. Deg.	EX Alum. ⁴	Total
1930	1	-	-	-	-	-	-	-	-	-	-	-	-	-	-	-	1
1931	1	-	-	-	-	-	-	-	-	-	-	-	-	-	-	-	1
1932	1	-	-	-	-	-	-	-	-	-	-	-	-	-	-	-	1
1933	-	-	-	-	-	-	-	-	-	-	-	-	-	-	-	-	-
1934	1	-	-	-	-	-	-	-	-	-	-	-	-	-	-	-	1
1935	1	-	-	-	-	-	-	-	-	-	-	-	-	-	-	-	1
1936	2	-	-	-	-	-	-	-	-	-	-	-	-	-	-	-	2
1937	5	-	-	-	-	-	-	-	-	-	-	-	-	-	-	-	5
1938	8	-	-	-	-	-	-	-	-	-	-	-	-	-	-	-	8
1939	4	-	-	-	-	-	-	-	-	-	-	-	1	-	-	1	6
1940	12	-	-	-	-	-	-	-	-	-	-	-	-	-	-	1	13
1941	10	-	-	-	-	-	-	-	-	-	-	1	-	-	-	1	12
1942	16	-	-	-	-	-	1	-	-	-	-	2	-	-	-	1	20
1943	17	-	3	-	1	6	-	-	-	-	-	-	-	-	-	-	-
1940	12	-	-	-	-	-	-	-	-	-	-	-	-	-	-	-	-
147(12) 321	-	-	-7TJ0	-1.2607(-)	-3402(1)	-29451(-)	-29(-)	-4-1940	12	-	-	-	-	-51(D[(1940) 1-3108(-	4)-2607(-)4D[(1941)-3w8223(-	-	-
147(12) 321	-	-	-24D[(19-)	-365-1.262598	-	-	-	-	-	-	-	-	-	-	-23-2951(-)-3223514D7841260-4167(-)-412	-	-
1942	16	-	-7-2224--	-	-4-2224--22-1940	12534D7841209-4167(-)-41254-2350	-	-	-	-	-	-	-	-	-	-	-
147(17) 321	-	-	-24D[(198-4089(-)-2872(-)-2951(-5-2224--221)-3w8223(-)-5033(-)M854-27841214-4167(-)-412)9(74-2350)-24083915-6951211-1408229	-	-	-	-	-	-	-	-	-	-	-	-	-	-
147(15) 321	-	-	-3-20 -15	-	-	-	-	-	-	-	-	-	-	-2-2224--191	-	-	-
147(14) 321	-	-	-7TJ0 -18-4065-1.262598	-	-	-	-	-	-	-	-	-	-	-7-2224--25	-	-	-
147(16) 321	-	-	-24D224--	-	-	-	-	-	-	-	-	-	-	-7-2224--265-	-	-	-

ALUMNI DONORS

By Primary School and Class, 2008-2009 (Continued)

Class	A&S	Ed.	Mgt.	Nursing	Newton College	Adv. Stds. ¹	Grad. A&S	Grad. Mgt.	Grad. Ed. ²	Grad. Nurs. ²	Grad. Adv. Stds.	Social Work	Social Law	STM ³	Hon. Deg.	EX Alum. ⁴	Total
1971	125	62	88	43	36	9	23	12	25	6	-	14	33	-	-	2	478
1972	176	75	86	38	31	12	31	7	48	4	-	17	34	2	-	4	565
1973	166	63	65	37	31	18	31	12	40	5	-	11	50	-	-	3	532
1974	281	61	94	39	41	12	27	7	20	10	-	16	59	3	-	4	674
1975	226	59	61	47	19	12	15	10	29	6	-	14	47	1	-	-	546
1976	273	79	105	44	-	11	15	18	33	10	-	16	43	1	-	1	649
1977	242	50	118	50	-	18	18	8	18	6	-	12	59	2	-	2	603
1978	292	41	116	37	-	14	24	14	24	11	-	6	63	-	-	-	642
1979	303	53	166	46	-	11	14	25	20	10	-	14	49	1	-	1	713
1980	298	32	143	49	-	13	19	22	30	11	-	16	41	1	-	2	677
1981	311	43	182	49	-	17	15	22	32	9	-	10	58	2	-	1	751

¹ Formerly known as the Evening College.

² Prior to June 1994, graduate degrees in Education and Nursing were granted by the Graduate School of Arts & Sciences.

³ STM includes Weston Jesuit alumni.

⁴ EX Alumni are individuals who attended Boston College without graduating.

Note: Alumni who received more than one degree from Boston College are counted by their primary degree only. These figures include donors with soft dollar credit. Deceased alumni are included. Data as of September 2009.

Source: Information Services, University Advancement

PHYSICAL PLANT

BUILDINGS RELATED TO BOSTON COLLEGE OPERATIONS Location and Primary Use, Spring 2009

Name	Location	Primary Use	Date Constructed or Acquired	Gross Square Footage¹
Alumni House	885 Centre St	Administrative	1974	15,628
Alumni Stadium	2604 Beacon St	Sports	1957	447,300
Bapst Library	Middle Campus	Library	1928	69,623
Barat House	885 Centre St	Administrative	1974	25,392
Bea House ²	176 Commonwealth Ave	Jesuit Residence	1965	4,685
Botolph House	18 Old Colony Rd	Administrative	1967	7,136
Bourneuf House	84 College Rd	Administrative	1985	4,460
Thea Bowman AHANA Center	72 College Rd	Administrative	1970	3,528
Brighton Maintenance Building	197 Foster St	Maintenance Garage	2004	15,408
Brock House	78 College Rd	Administrative	1972	4,146
Campion Hall	Middle Campus	Academic & Administrative	1955	112,491
Canisius House ²	67 Lee Rd	Jesuit Residence	1966	3,761
Carney Hall	Middle Campus	Academic & Administrative	1962	101,059
Cheverus Hall	127 Hammond St	Student Residence	1960	32,102
Claver Hall	40 Tudor Rd	Student Residence	1955	16,702
Connolly Carriage House	300 Hammond St	Academic	1975	7,035
Connolly Faculty Center	300 Hammond St	Academic	1975	13,799
Connors Family Retreat & Conference Center (CFRCC)	Dover, MA	Auxiliary Svcs/Admin	2004	65,230
CFRCC Caretaker House	Dover, MA	Residence	2004	2,214
CFRCC Annex	Dover, MA	Auxiliary Svcs/Admin	2004	5,514
CFRCC Garage	Dover, MA	Garage	2004	2,026
Silvio O. Conte Forum	2601 Beacon St	Sports & Administrative	1988	270,506
John M. Corcoran Commons	60 St. Thomas More Rd	Student Services	1994	63,736
Cottage and Garages	885 Centre St	Residence	1974	3,708
Cushing Hall	Middle Campus	Academic & Administrative	1960	65,141
Cushing House	885 Centre St	Student Residence	1974	25,709
Daly House ²	262 Beacon St	Jesuit Residence		

BUILDINGS RELATED TO BOSTON COLLEGE OPERATIONS Location and Primary Use, Spring 2009 (Continued)

Name	Location	Primary Use	Date Constructed or Acquired	Gross Square Footage ¹
Haley House	314 Hammond St	Academic & Administrative	1969	9,294
Hardey House	885 Centre St	Student Residence	1974	40,152
Heffernan House & Garage	110 College Rd	Administrative	1997	4,756
Higgins Hall	Middle Campus	Academic & Administrative	1966	234,722
Hopkins House	116 College Rd	Administrative	1968	4,274
Hovey House	258 Hammond St	Academic & Administrative	1971	11,148
Ignacio Hall	100 Commonwealth Ave	Student Res/Administrative	1973	121,542
Joyce House	31 Lawrence Ave	Academic	1979	5,101
Kenny-Cottle Library	885 Centre St	Library	1974	52,916
Keyes North/South	885 Centre St	Student Residence	1974	65,266
Kostka Hall	149 Hammond St	Student Residence	1957	30,704
Law East Wing	885 Centre St	Academic	1999	49,109
Law Library	885 Centre St	Library	1996	83,017
Lawrence House	122 College Rd	Administrative	1968	4,360
Loyola Hall	42 Tudor Rd	Student Residence	1955	23,348
Lyons Hall	Middle Campus	Academic & Administrative	1951	84,111
Manresa House & Garage	24 Mayflower Rd	Jesuit Residence	2004	4,461
Mary House	885 Centre St	Academic & Administrative	1974	4,265
McElroy Commons	Middle Campus	Student Services & Admin	1960	137,905
McElroy Switch House	Middle Campus	Administrative	1960	1,049
McGuinn Hall	Middle Campus	Academic & Administrative	1968	143,310
Medeiros Townhouses	60 Tudor Rd	Student Residence	1971	22,568
Eugene F. Merkert Chemistry Center	2609 Beacon St	Academic & Administrative	1991	116,601
Mill Street Cottage	29 Mill St	Residence	1974	2,879
Modular Apartments	Lower Campus	Student Residence	1970	98,200
Murray Carriage House	292 Hammond St	Academic	1967	2,618
Murray House	292 Hammond St	Commuter Center	1967	8,490
O'Connell House	185 Hammond St	Student Services	1938	32,156
Thomas P. O'Neill, Jr. Library	Middle Campus	Central Research Library	1984	206,910
Parking Garage	2599 Beacon St	General Parking Facility	1979	279,354
Parking Garage (New)	40 St. Thomas More Rd	General Parking Facility	1994	328,972
Quonset Hut	885 Centre St	Gymnasium	1974	5,964
Rahner House	96 College Rd	Administrative	1952	2,799
Roberts House & Garage ³	246 Beacon St	Jesuit Residence	1989	8,583
Robsham Theater Arts Center	50 St Thomas More Rd	Student Services & Acad	1981	31,906
Roncalli Hall	200 Hammond St	Student Residence	1965	40,674
Rubenstein Hall	90 Commonwealth Ave	Student Residence	1973	123,739
Service Building	Middle Campus	Academic & Administrative	1948	33,718
Shaw House	372 Beacon St	Student Residence	1962	9,218
Commander Shea Field	2605 Beacon St	Baseball/Soccer Field	1960	
Southwell Hall	38 Commonwealth Ave	Administrative	1937	12,338
St. Clement's Hall	197 & 201 Foster Street	Administrative	2004	102,625
St. Mary's Hall ²	Middle Campus	Jesuit Residence	1917	135,721
St. Thomas More Hall	2150 Commonwealth Ave	Administrative	1955	64,584
Stuart House and the James W. Smith Wing	885 Centre St	Academic & Administrative	1974	104,861
Trinity Chapel (Newton)	885 Centre St	Chapel	1974	20,578

BUILDINGS RELATED TO BOSTON COLLEGE OPERATIONS Location and Primary Use, Spring 2009 (Continued)

Name	Location	Primary Use	Date Constructed or Acquired	Gross Square Footage ¹
Vanderslice Hall	70 St. Thomas More Rd	Student Residence	1993	119,492
Vouté Hall	110 Commonwealth Ave	Student Residence	1988	87,189
Michael P. Walsh Hall	150 St. Thomas More Rd	Student Res. & Dining Facility	1980	205,805
Waul House	256 Hammond St	Administrative	2000	16,407
Welch Hall	182 Hammond St	Student Residence	1965	40,724
Weston Observatory	Weston, MA	Research & Administrative	1948	21,696
Williams Hall	144 Hammond St	Student Residence	1965	40,738
Xavier Hall	44 Tudor Rd	Student Residence	1955	16,706
Yawkey Athletics Center	2597 Beacon Street	Sports	2004	73,927
---	2 Boston Rd Property (includes Outbuildings)	TBA	2000	16,591
---	3 Lake Street	Academic & Administrative	2006	19,848
---	4 Quincy Rd	Residence	2002	4,801
---	9 Lake St	Academic & Administrative	2004	64,660
---	10 Stone Ave	TBA	2008	6,645
---	11 Chestnut Hill Rd & Garage	Residence	2000	5,334
---	14 Mayflower Rd & Garage	Administrative	1999	5,245
---	18 Wade St & Garage	Residence	2006	6,349
---	19 Mayflower Rd & Garage	Residence	2004	4,442
---	21 Campanella Way	Academic & Administrative	2002	154,506
---	22 Stone Ave & Garage	Administrative	1999	4,758
---	24 Quincy Rd	Academic	1998	4,317
---	24 Wade St & Garage	Residence	2006	5,523
---	25 Lawrence Ave & Garage	Administrative	1993	5,180
---	26 Lane Park	Residence	2009	4,745
---	29 Mayflower Rd & Garage	Residence	2006	4,872
---	30 Old Colony Rd	Residence	2005	5,158
---	30 Quincy Rd	Jesuit Residence	1999	4,534
---	30 Wade St & Garage	Residence	2006	6,862
---	31 Lawrence Ave Garage	Administrative	1996	1,985
---	32 Mayflower Rd & Garage	Residence	2002	4,833
---	36 College Rd	Administrative	1974	3,772
---	40 Old Colony Rd & Garage	Jesuit Residence	2001	6,400
---	42 St. Stephens Green	Administrative	2000	8,488
---	43 St. Stephens Green	Administrative	2000	7,951
---	48 Old Colony Rd & Garage	Residence	2006	4,521
---	50 College Rd & Garage	Administrative	1996	4,303
---	55 Lee Rd	Administrative	1978	7,363
---	60 Priscilla Rd	Residence	2005	3,919
---	66 Commonwealth Ave	Student Residence & Admin	1989	58,478
---	66 Lee Rd	Residence	1999	2,510
---	90 St. Thomas More Rd	Student Residence	1993	110,488
---	110 St. Thomas More Rd	Student Residence	2004	104,278
---	117 Lake St	Library & Academic	2007	51,846
---	129 Lake St	Academic & Administrative	2007	90,110
---	130 Beacon St	Residence	2002	9,340
---	136 Beacon St & Garage	Residence	2004	4,097

BUILDINGS RELATED TO BOSTON COLLEGE OPERATIONS
Location and Primary Use, Spring 2009 (Continued)

Name	Location	Primary Use	Date Constructed or Acquired	Gross Square Footage¹
---	142 Beacon St	Administrative	1997	3,446

FACILITY CAPACITIES Fall 2009

Lecture/Event Facility & Location	Standard Seating
Auditoriums	
Cushing Hall 001	185
Devlin Hall 008	303
Fulton Hall 511	198
Gasson Hall 305 (Fulton Debate)	99
Higgins 300	153
Higgins 310	80
McGuinn Hall 121	256
Merkert Chemistry Center 127	150
Robsham Theater Arts Center	500
Stuart Hall 315, Newton Campus	138
Stuart Hall 411, Newton Campus	99
Law School East Wing 120, Newton Campus	125
Law School East Wing 115a, Newton Campus	150
Law School East Wing 115b, Newton Campus	150
Law School East Wing 200, Newton Campus	96
Law School East Wing 400, Newton Campus	56
Athletics	
Alumni Stadium	44,500
Kelley Rink, Conte Forum	9,160
Power Gymnasium, Conte Forum	975
The Shea Room, Conte Forum	300
Flynn Student Recreation Complex	2,809
Court A	1,500
Court B	1,309

Note: All facilities are on the Chestnut Hill campus unless otherwise noted. University facilities are available for function purposes through the Bureau of Conferences and/or the primary user responsible for the facility. Capacities may vary based on function type to meet safety permit requirements. Facilities may not be available to all groups.
Source: Facilities Management and Office of Student Services

SUMMARY OF BUILDING USE Spring 2009

Building Use	Number of Buildings
Student Residence ¹	29
Administrative	31
Academic & Administrative ²	28
Jesuit Residence ³	8
Miscellaneous Use ⁴	42
Total	138

¹ Keyes North and South are considered one building; Duchesne East and West are considered one building; Modulars are considered one building.

² Includes Weston Observatory.

³ Excludes 188 Beacon St & Roberts House.

⁴ Includes gymnasiums, libraries, student services, etc.

Note: The above statistics exclude leased properties used in University operations.

Statistics include only properties owned by Boston College as of May 31, 2009.

Source: Institutional Research, Planning & Assessment

CLASSROOMS Spring 2009

Building	Number of Classrooms	Number of Stations	Building	Number of Classrooms	Number of Stations
Campion Hall	12	555	Law East Wing	6	641
Carney Hall	25	1,097	Lyons Hall	7	316
Cushing Hall	10	689	McGuinn Hall	10	488
Devlin Hall	9	693	Merkert Chemistry Center	3	246
Fulton Hall	20	1,221	O'Neill Library	8	204
Gasson Hall	20	897	Stuart House	10	529
Higgins Hall	8	471	9 Lake Street	5	200
			Total	153	8,247

Note: The above statistics exclude leased properties used in university operations. Statistics include only properties owned by Boston College as of May 31, 2009.
Source: Institutional Research, Planning & Assessment

DINING FACILITIES Fall 2009

Dining Halls	Location	Function Rooms	Location
Carney's	McElroy Commons	Boston Room	60 St. Thomas More Road
Eagle's Nest Snack Bar	McElroy Commons	Heights Room	60 St. Thomas More Road
Faculty Dining Room	McElroy Commons	Newton Room	60 St. Thomas More Road
The Chocolate Bar	McElroy Commons	Walsh Function Room	Walsh Hall Room 104
Hillside Café	Campanella Way	The Player's Club	Walsh Hall Room 114
Lower Live	Corcoran Commons	Murray Room	Yawkey Center, 4 th Floor
The Loft @ Addie's	Corcoran Commons		
Stuart Dining Hall	Stuart House, Newton Campus		
Dining & Law School Commons	Stuart House, Newton Campus		
Welch Dining Hall	Lyons Hall		
The Bean Counter	Fulton Hall Lobby		

Note: All facilities are on the Chestnut Hill campus unless otherwise noted. University facilities are available for function purposes through the Bureau of Conferences. Function rooms may not be available to all groups.

Source: Facilities Management and Dining Services

RESIDENCE HALL STATISTICS By Building, Fall 2009

Residence Hall	Address	Living Units	Residents	Staff ¹	Total
Chestnut Hill Campus					
Upper Campus					
Cheverus Hall	127 Hammond Street	65	147	3	150
Claver Hall	40 Tudor Road	39	97	0	97
Fenwick Hall	46 Tudor Road	97	228	5	233
Fitzpatrick Hall	137 Hammond Street	88	209	4	213
Gonzaga Hall	149 Hammond Street	98	219	5	224
Kostka Hall	149 Hammond Street	80	166	3	169
Loyola Hall	42 Tudor Road	57	112	4	116
Medeiros Townhouses	60 Tudor Road	51	100	3	103
Roncalli Hall	200 Hammond Street	81	169	4	173
Shaw Hall	372 Beacon Street	7	20	1	21
Welch Hall	182 Hammond Street	92	196	5	201

RESIDENCE HALL STATISTICS By Building, Spring 2010

Residence Hall	Address	Living Units	Residents	Staff ¹	Total
Chestnut Hill Campus					
Upper Campus					
Cheverus Hall	127 Hammond Street	65	142	3	145
Claver Hall	40 Tudor Road	39	93	0	93
Fenwick Hall	46 Tudor Road	97	222	5	227
Fitzpatrick Hall	137 Hammond Street	88	204	4	208
Gonzaga Hall	149 Hammond Street	98	219	5	224
Kostka Hall	149 Hammond Street	80	167	3	170
Loyola Hall	42 Tudor Road	57	112	4	116
Medeiros Townhouses	60 Tudor Road	51	100	3	103
Roncalli Hall	200 Hammond Street	81	165	4	169
Shaw Hall	372 Beacon Street	7	20	1	21
Welch Hall	182 Hammond Street	92	189	5	194
Williams Hall	144 Hammond Street	81	168	4	172
Xavier Hall	44 Tudor Road	51	100	4	104
		887	1,901	45	1,946

Lower Campus

alth Avenue Td[-7.24.6454.74 23.308 560.16 0.48 13.15ref]

FINANCE

HIGHLIGHTS OF FINANCIAL OPERATIONS

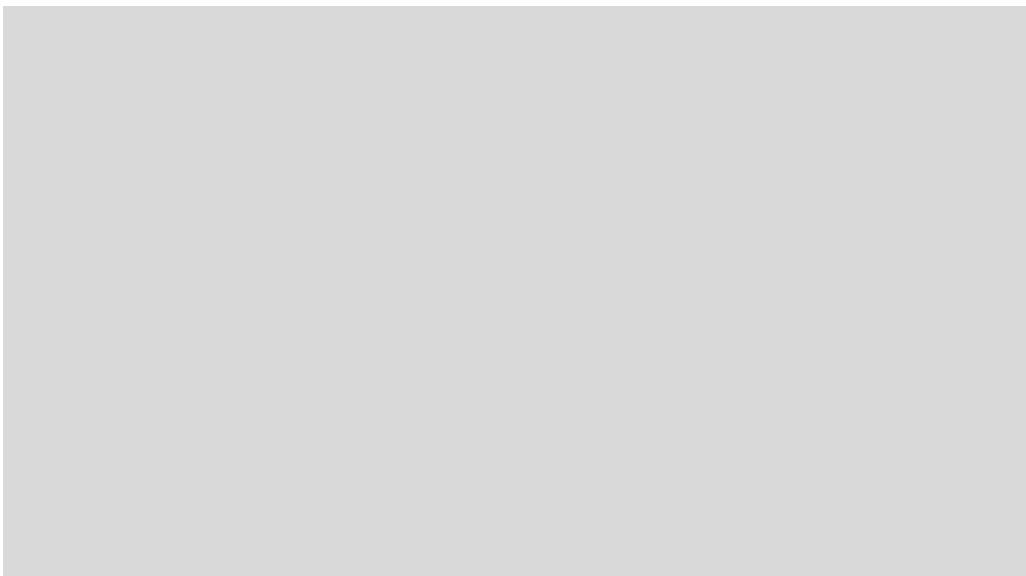
Fiscal Years 2005 – 2009 (Dollars in Millions)

	2005	2006	2007	2008	2009
Operating revenues					
Tuition and fees	\$355.6	\$377.8	\$400.6	\$425.5	\$455.1
Sponsored research and training grants	35.8	39.1	43.2	46.7	50.3
Government grants and student aid	5.3	5.0	5.3	5.2	5.0
Auxiliary enterprises	118.3	126.0	135.6	146.1	145.2
Other revenues	26.0	26.0	26.0	26.0	26.0

Note: Costs associated with the operation and maintenance of plant facilities are functionally allocated. These costs totaled \$39.4, \$44.9, \$48.3, \$52.3 and \$54.4 million for fiscal years 2005, 2006, 2007, 2008 and 2009 respectively.
Source: Office of the Controller

TOTAL OPERATING EXPENSES

Fiscal Year 2009



CONDENSED STATEMENT OF FINANCIAL POSITION

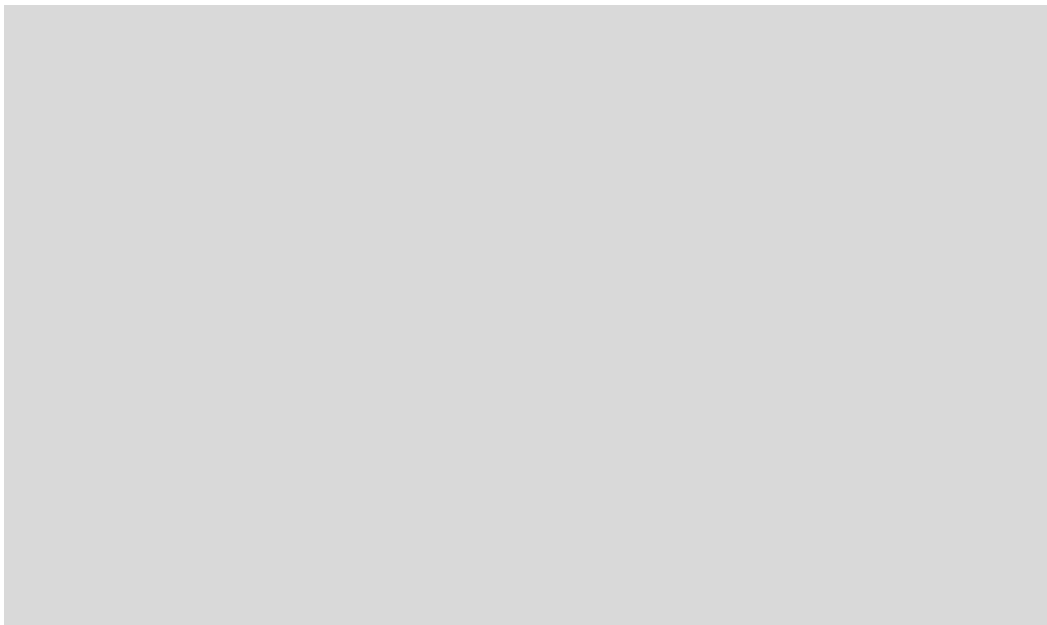
Fiscal Years 2005 – 2009 (Dollars in Millions)

	2005	2006	2007	2008 ¹	2009
Assets					
Investments	\$1,355.7	\$1,596.7	\$1,859.1	\$1,925.9	\$1,528.7
Trustee deposits	46.2	36.8	19.1	44.4	31.9
Receivables & other assets	195.2	181.0	200.0	231.5	300.4
Physical plant	1,212.4	1,267.3	1,320.0	1,450.3	1,568.4
Accumulated depreciation/amortization	(375.2)	(412.7)	(453.0)	(499.0)	(530.9)
Total assets	\$2,434.3	\$2,669.1	\$2,945.2	\$3,153.1	\$2,898.5
Liabilities					
Payables and accrued liabilities	\$140.9	\$165.4	\$177.0	\$175.9	\$1749(9)TTJ9.078 0

¹ 2008 amounts adjusted to reflect Weston Jesuit School of Theology affiliation.
Source: Office of the Controller

TOTAL ASSETS AND LIABILITIES

Fiscal Years 2005 through 2009



TUITION AND FEES

Academic Years 2001 – 2010

	AY 00-01	AY 01-02	AY 02-03	AY 03-04	AY 04-05	AY 05-06	AY 06-07	AY 07-08	AY 08-09	AY 09-10
Undergraduate Schools										
Arts & Sciences, Education,										
Management, Nursing	\$22,680	\$24,050	\$25,430	\$27,080	\$28,940	\$30,950	\$33,000	\$35,150	\$37,410	\$38,530
Advancing Studies (per course)	954	1,002	1,054	1,102	1,158	1,216	1,278	1,342	1,410	1,452
Summer Session (per credit hour)	396	416	438	458	458	508	534	562	590	608
Graduate Schools										
Arts & Sciences (per credit hour)	\$700	\$736	\$774	\$810	\$900	\$990	\$1,040	\$1,092	\$1,148	\$1,182
Education, Nursing (per credit hour)	700	722	760	796	836	878	922	970	1,020	1,050
Law School	25,790	27,080	28,440	29,720	31,520	33,110	34,770	36,510	38,340	39,490
Management (per credit hour)	792	832	874	914	970	1,020	1,072	1,126	1,184	1,220
MSW part-time (per credit hour)	550	578	608	704	740	778	820	860	904	932
DSW part-time (per credit hour)	634	666	700	704	740	778	820	860	904	932
Theology & Ministry (per credit hour)	-	-	-	-	-	-	-	-	780	804

¹ Fees for laboratories in Biology and Chemistry; fees in other sciences and in most other fields are frequently lower. Fees assume two laboratory courses per year.
 Note: All tuition and fees listed are for two semesters, except for those stated as "per course" or "per credit hour."
 Source: Office of Student Services

BOSTON COLLEGE UNDERGRADUATE TUITION RESTATED IN 1982-84 DOLLARS
Effect of Inflation and Real Growth

ACADEMIC RESOURCES & RESEARCH ACTIVITY

BOSTON COLLEGE LIBRARIES Fall 2009

Bapst Art Library
Middle Campus

Catherine O'Connor Library
Weston Observatory, Weston, MA

Educational Resource Center
Campion Hall

**The John J. Burns Library of Rare Books
and Special Collections**
Burns Library, Middle Campus

Law Library
Newton Campus

O'Neill Library
Main Research Library, Middle Campus

Social Work Library
McGuinn Hall, Lower Level

Theology & Ministry Library
Brighton Campus

Source: University Librarian

BOSTON COLLEGE LIBRARY HOLDINGS Fiscal Year 2009

Total Volumes	2,547,714	Total Electronic Serial Subscriptions²	36,553
Bapst	53,770		
Burns	166,029	Total e-Books³	304,701
Educational Resource Center	50,368		
Law	249,432	Total Microform Units	4,226,524
O'Neill	1,972,517	Law	1,542,293
Social Work	44,300	O'Neill	2,684,231
Theology & Ministry ¹	2,564		
Weston Observatory	8,734		
		Total Government Documents	219,174
Total Paper Serial Subscriptions	6,762	Law	4,732
Bapst	152	O'Neill	214,442
Burns	47		
Educational Resource Center	45		
Law	2,471		
O'Neill	3,313		
Social Work	63		
Theology & Ministry	671		

¹ Only includes books at the Theology & Ministry library owned by Boston College.

² Number of unique titles.

³ Includes catalogued e-Books reported in volumes.

Source: University Librarian

EXPENDITURES FOR LIBRARY MATERIALS

Library	2004-2005	2005-2006	2006-2007	2007-2008	2008-2009
Bapst ¹	90,417	93,943	97,608	-	-
Burns	328,512	349,434	332,210	325,322	316,722
Educational Resource Center	79,672	87,424	90,321	95,634	97,246
Law	1,117,537	1,157,464	1,292,614	1,350,938	1,368,536
O'Neill ²	6,078,265	6,348,585	6,642,860	7,163,500	7,183,891
Theology & Ministry	-	-	-	-	125,836
Social Work	108,147	111,579	107,313	129,823	129,347
Total	\$7,802,550	\$8,148,429	\$8,562,926	\$9,065,217	\$9,221,578

¹ Starting in fiscal year 2008, Bapst expenditures are included with O'Neill expenditures.

² Includes general expenditures recorded as "University Librarian".

Source: Office of the Controller

RESEARCH AND SPONSORED PROJECTS

Highlights of Sponsored Activities, 2008-2009

Fiscal year 2009 was a record year for sponsored project activity at Boston College. A total of 367 proposals were submitted in FY2009 for a total amount requested of \$173,707,593 for multi-year project periods. In FY2009, Boston College received 319 funding actions for a total of \$58.5 million for research and sponsored programs activity. Total research expenditures for FY2009 were \$59.2 of which about 70% were incurred under awards from Federal agencies and about 30% under awards from corporations, foundations and other organizations. Overall, Boston College faculty members continue to be successful in securing external funds and Boston College research Centers and Institutes continue to grow.

Source: Office for Sponsored Programs

SUMMARY OF SPONSORED FUNDING ACTIONS

2008-2009

Note: A funding action is any type of action that obligates funds to BC such as a new award, or continuation, amendment, or supplement to an award which may increase or decrease the amount of

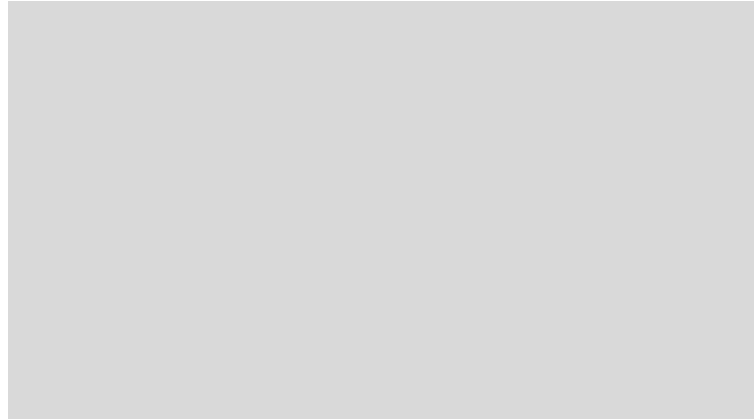
SPONSORED PROJECTS

SPONSORED PROJECT ACTIVITY

Fiscal Year 2000 through 2009

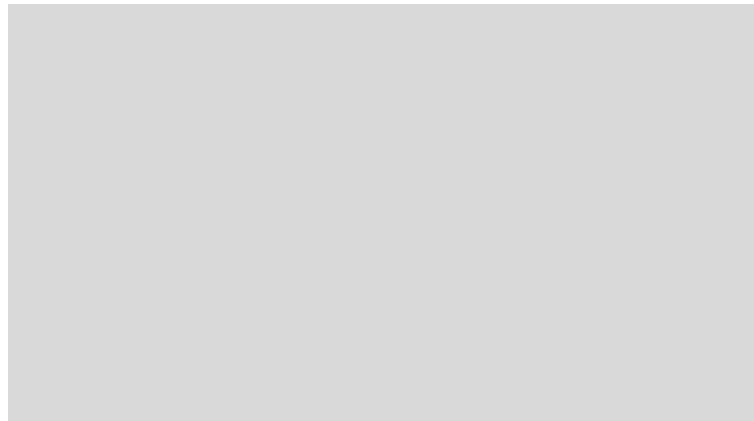
Total Accounted Expense (Dollars in Thousands)

Fiscal Year	Total
1999-00	\$36,370
2000-01	\$39,460
2001-02	\$43,050
2002-03	\$43,295



Source: Office for Sponsored Programs; Office of the Controller

Number of Proposals Submitted



Source: Office for Sponsored Programs

SELECTED SPONSORED PROJECT AWARDS 2008-2009

Title	Source of Funding	Amount
Biology		
Software Tools for the Next Generation Sequencer Data	NIH/National Human Genome Research Institute	\$718,377
Chemistry		
Catalytic and Stereoselective C-C Bond Forming Reactions	NIH/National Institute of General Medical Science	\$395,807
Education		
Science Educators for Urban Schools	National Science Foundation	\$749,980
Center for Child, Family and Community Partnerships		
Boston Connects Expansion	New Balance Foundation	\$1,534,667
Center for the Study of Testing, Evaluation & Educational Policy (CSTEPP)		
The Diagnostic Geometry Assessment Project	U.S. Department of Education	\$870,930
Graduate School of Social Work:		
Self-Direction/Cash & Counseling Research and Technical Assistance	Robert Wood Johnson Foundation	\$1,870,562
Center for Aging and Work		
Sloan Center for Aging & Work	Alfred P. Sloan Foundation	\$1,681,974
Irish Institute		
Exchange Programs for Northern Ireland and Ireland	U.S. Department of State	\$991,917
Management / Center for Retirement Research		
Retirement Research Consortium	Social Security Administration	\$3,577,933
School of Nursing		
Mechanisms Underlying Preterm Birth in Minority Women	NIH/National Institute of Nursing Research	\$410,106
Physics		

ATHLETICS

VARSITY SPORTS RECORDS

	2004-05			2005-06			2006-07			2007-08			2008-09		
	W	L	T	W	L	T	W	L	T	W	L	T	W	L	T
Men's Records															
Football	9	3	-	9	3	-	10	3	-	11	3	-	9	5	-
Basketball	25	5	-	28	8	-	22	12	-	14	17	-	22	12	-
Ice Hockey	26	7	7	26	13	3	29	12	1	25	11	8	18	14	5
Soccer	13	5	2	5	9	2	8	7	2	15	5	1	11	7	3
Baseball	37	20	-	28	25	-	24	27	1	26	27	-	34	26	-
Swimming & Diving	9	3	-	10	4	-	9	5	-	7	8	1	7	4	-
Tennis	11	13	-	7	18	-	6	19	-	9	12	-	20	12	-
Women's Records															
Basketball	20	10	-	21	12	-	13	16	-	21	12	-	23	12	-
Field Hockey	17	6	-	13	7	-	14	6	-	12	8	-	12	7	-
Ice Hockey	10	20	4	20	11	4	24	10	2	14	15	7	22	9	5
Swimming & Diving	10	2	-	9	1	-	10	4	-	9	5	-	3	5	1
Tennis	11	11	-	7	14	-	5	16	-	9	12	-	7	13	-
Lacrosse	10	7	-	8	9	-	6	11	-	7	10	-	9	9	-
Soccer	15	7	-	13	6	2	12	7	3	11	5	4	15	6	2
Softball	20	25	-	22	26	-	15	31	-	32	31	-	18	33	-
Volleyball	20	12	-	9	22	-	12	19	-	14	18	-	8	24	-

Source: Media Relations Office

INTERCOLLEGIATE SPORTS PARTICIPATION 2008-2009

Varsity Sport	Male	Female
Baseball	39	-
Basketball	12	14
Fencing	17	12
Field Hockey	-	25
Football	103	-
Golf	7	6
Ice Hockey	25	22
Lacrosse	-	26
Rowing	-	62
Sailing	17	20
Skiing	11	10
Soccer	30	25
Softball	-	21
Swimming & Diving	49	50
Tennis	12	10
Track & Field and Cross Country	41	55
Volleyball	-	14
Totals	363	372
Total Participants	735	

Source: Athletics Compliance Office

INTRAMURAL SPORTS PARTICIPATION 2008-2009

Sport	# of Teams	Male	Female	Total ¹
Fall				
Men's Softball	30	480	-	480
Coed Softball	19	152	152	304
Flag Football	72	1,000	80	1,080
Men's Soccer	16	240	-	240
Women's Soccer	16	-	240	240
Coed Volleyball	53	265	265	530
Men's Basketball Tournament	85	935	-	935
Women's Basketball Tournament	16	-	176	176
Women's Singles Tennis Tournament	-	-	14	14
Men's Singles Tennis Tournament	-	48	-	48
Doubles Tennis Tournament	-	44	38	82
Racquetball	-	16	0	16
Squash	-	-	-	0
Golf	-	46	10	56
Dodgeball	-	100	44	144
Winter				
Intermediate Ice Hockey	9	99	19	118
Advanced Ice Hockey	8	122	1	123
Men's Indoor Soccer	62	640	32	672
Women's Indoor Soccer	22	-	274	274
NBA Men's Basketball	24	148	-	148
NCAA Men's Basketball	79	589	9	598
Women's Basketball	16	-	121	121
Spring				
Men's Singles Tennis Tournament	-	27	-	27
Women's Singles Tennis Tournament	-	-	11	11
Coed Doubles Tennis	-	13	13	26
Men's Doubles Tennis	-	40	-	40
2cce sin -				

¹ Students are counted once for each intramural sport in which they participate.
Source: Flynn Recreational Complex

GENERAL INFORMATION

PRESIDENTS OF BOSTON COLLEGE

1. John Bapst, S.J.	1863 – 1869	14. Charles W. Lyons, S.J.	1914 - 1919
2. Robert W. Brady, S.J.	1869 – 1870	15. William Devlin, S.J.	1919 – 1925
3. Robert Fulton, S.J.	1870 – 1880	16. James H. Dolan, S.J.	1925 – 1932
4. Jeremiah O'Connor, S.J.	1880 – 1884	17. Louis J. Gallagher, S.J.	1932 – 1937
5. Edward V. Boursaud, S.J.	1884 – 1887	18. William J. McGarry, S.J.	1937 – 1939
6. Thomas H. Stack, S.J.	1887	19. William J. Murphy, S.J.	1939 – 1945
7. Nicholas Russo, S.J.	1887 – 1888	20. William L. Keleher, S.J.	1945 – 1951
8. Robert Fulton, S.J.	1888 – 1891	21. Joseph R. N. Maxwell, S.J.	1951 – 1958
9. Edward I. Devitt, S.J.	1891 – 1894	22. Michael P. Walsh, S.J.	1958 – 1968
10. Timothy Brosnahan, S.J.	1894 – 1898	23. W. Seavey Joyce, S.J.	1968 – 1972
11. W. G. Read Mullan, S.J.	1898 – 1903	24. J. Donald Monan, S.J.	1972 – 1996
12. William F. Gannon, S.J.	1903 – 1907	25. William P. Leahy, S.J.	1996 –
13. Thomas I. Gasson, S.J.	1907 – 1914		

Founder of
Boston College:

Rev. John McElroy, S.J.

Pastor, Immaculate
Conception Parish,
Boston 1861-1863

HONORARY DEGREES & PRESIDENT'S MEDALS Awarded By Boston College, 1999-2009

1999

Richard A. Grasso, The President's Medal for
Excellence (April 15, 1999)

Anna Faith Jones, L.H.D.

Alice E. McDermott, L.H.D.

Bill Richardson, LL.D.¹

William F. Russell, L.H.D.

David Trimble, LL.D.

2000

HONORARY DEGREES Granted By Boston College

Doctor of Arts	D.A.
Doctor of Business Administration	D.B.A.
Doctor of Commercial Science	D.C.S.
Doctor of Engineering Science	D.E.Sc.
Doctor of Fine Arts	D.F.A.
Doctor of Journalism	D.Journ.
Doctor of Music	D.Mus.
Doctor of Nursing Science	D.N.S.
Doctor of Public Administration	D.Pub.Adm.
Doctor of Science	D.Sc.
Doctor of Science in Education	D.Sc.Ed.
Doctor of the Science of Law	D.Sc.L.
Doctor of the Science of Theology	D.Sc.T.
Doctor of Social Science	D.S.S.
Doctor of History	H.D.
Doctor of History in Philosophy	Hist.Phil.D.
Doctor of Civil and Canon Laws	J.U.D.
Doctor of Laws	LL.D.
Doctor of Humane Letters	L.H.D.
Doctor of Letters, Doctor of Literature	Litt.D.
Doctor of Religion	R.D.
Doctor of Sacred Theology	S.T.D.
Doctor of Science	Sc.D.

Source: Commencement Programs, 1995-present

TYPES OF DEGREES Conferred At Boston College

Bachelor of Arts	A.B.
Bachelor of Science	B.S.
Bachelor of Sacred Theology	S.T.B.
Master of Arts	M.A.
Master of Arts in Teaching	M.A.T.
Master of Business Administration	M.B.A.
Master of Divinity	M.Div.
Master of Education	M.Ed.
Master of Laws	LL.M.
Master of Science	M.S.
Master of Science in Accounting	M.S.A.
Master of Science in Teaching	M.S.T.
Master of Social Work	M.S.W.
Master of Theological Studies	M.T.S.
Master of Theology	Th.M.
Certificate of Advanced Educational Specialization	C.A.E.S.
Certificate of Advanced Graduate Studies	C.A.G.S.
Licentiate in Sacred Theology	S.T.L.
Doctor of Education	Ed.D.
Doctor of Law	J.D.
Doctor of Philosophy	Ph.D.
Doctor of Sacred Theology	S.T.D.

PRIMARY ACCREDITING AGENCIES

AACSB International - Association to Advance Collegiate Schools of Business	Commission on Collegiate Nursing Education
American Association of Colleges for Teacher Education	Council on Social Work Education
American Bar Association	Interstate Certification Compact
American Chemical Society	National Collegiate Athletic Association
American Psychological Association	National League for Nursing
Association of American Law Schools	New England Association of Schools and Colleges
Association of Theological Schools	

Source: Deans' Offices

FACT BOOK INDEX

- Academic Administration, 17
 Academic Calendars, 93
 Academic Institutes and Centers, 18
 Academic Resources and Research Activity, 80-84
 Accrediting Agencies, 91
 Administration and Faculty, 14-29
 AHANA and International Student Enrollment, 37
 Alumni and Advancement, 54-61
 Alumni Association Board of Directors, 54
 Alumni Achievement Awards, 54
 Alumni by Gender and Class, 58
 Alumni by Primary School and Class, 56-57
 Alumni Regional Chapters, 54
 Alumni Donors by Primary School and Class, 60-61
 Alumni, Geographic Distribution, 55
 Applications, Acceptances, and Enrollment, Freshmen, 32
 Applications, Acceptances, and Enrollment, Transfer Students, 34
 Association Memberships, 92
 Athletics, 86-87
- Board of Trustee Associate Memberships, 15-16
 Board of Trustee Chairmen, 16
 Board of Trustee Membership, 14
 Boston College, A Brief History, 6
 Boston College, A Chronology, 7-10
 Boston College Profile, 11
 Boston College Properties, 68
 Building Use, Summary, 69
 Buildings and Grounds, See Physical Plant
 Buildings, Boston College, 64-67
- Campus Maps, 96-98
 Chairmen, Board of Trustees, 16
 Charts of Administration, 20-23
 Classrooms, 69
 Compensation, Faculty, 29
 Contracts and Grants, See Academic Resources and Research Activity
 Credit Hours by School, 36
 Cross Application Competitor Schools, 34
- Deans, Academic, See Academic Administration
 Degrees Conferred at Boston College, Types, 91
 Degrees Conferred, 46-50
 Development Statistics, 54-61
 Dining Facilities, 71
 Donors by Giving Club, 59
 Dormitories, See Residence Halls
- Enrollment, Full-Time Equivalent, 38
 Enrollment, Full-Time Freshman by Year and Gender, 32
 Enrollment, Graduate, 36-38, 40
 Enrollment, International Students, 44-45
 Enrollment, Minority Students, See AHANA
 Enrollment, Resident and Non-Resident, 39
 Enrollment, Summer Session, 39
 Enrollment, Transfer Students, 34
 Enrollment, Undergraduate by School, Gender, and Status, 36-37
 Enrollment, Undergraduate Majors by School, 41
 Enrollment, Undergraduate Minors by School, 42
 Executive Vice President Units, 23
- Facilities, See Physical Plant
 Facility Capacities, 69
 Faculty, Administration and, 14-29
 Faculty, Compensation by Rank, 29
 Faculty, by Highest Degree Earned and Gender, 26
 Faculty, by Highest Degree Earned and Rank, 27
 Faculty, by Rank and Gender, 27
 Faculty, by School and Gender, 26
 Faculty, by School and Rank, 25
 Faculty, by School and Tenure Status, 26
 Faculty, Full-Time Equivalent by School, 27
 Faculty, Full-Time, Teaching Fellows, Teaching Assistants by School and Department, 28
 Fellowships, 52
 Finance, 74-77
 Financial Aid, Undergraduate, 51
 Financial Operations, Highlights, 75
 Financial Position Statement, Condensed, 76
 Founder of Boston College, 90
 Freshman Admission Profile, 32
 Freshman Applications, Acceptances, and Enrollment, 32
 Freshman, Full-Time, Enrollment by Year and Gender, 32
 Freshman, Geographic Distribution, 33
 Full-Time Equivalent Enrollment, 38
 Fundraising, See Alumni & Advancement
- General Information, 90-98
 Geographic Distribution, Alumni, 55
 Geographic Distribution, Freshman Class, 33
 Geographic Distribution, Undergraduates, 35
 Geographic Distribution, Undergraduate and Graduate International Students, 45
 Gifts to the University, 59
 Graduate Degrees Conferred, 46, 50
 Graduate Enrollment, 36-38, 40
 Graduation and Retention Rates, 52
 Grant Statistics, See Academic Resources and Research Activity

FACT BOOK INDEX (CONTINUED)

- History, Boston College, 6-10
- Honorary Degrees Awarded, 90
- Honorary Degrees, Types Granted, 91

- Intercollegiate Sports Participation, 86
- International Student and Scholar Statistics, 44-45
- Intramural Sports Participation, 87
- Institutes and Centers, Academic, 18

- Jesuit Community at Boston College, 19
- Jesuit Community at Boston College, Weston, 19

- Libraries, 80
- Library Expenditures, 80
- Library Holdings, 80

- Majors, Undergraduate, 41, 43
- Maps, Campus, 96-98
- Minority Student Enrollment, See AHANA
- Minors, Undergraduate, 42, 43
- Mission Statement, 2

- Officers of the University, 17
- Offices, 70
- Organization Chart, Administration, 20
- Organization Chart, Provost and Dean of Faculties, 21-22
- Organization Chart, Executive Vice President, 23

- Personnel, Professional, Administrative, and Support Staff, 24-25
- Personnel, Restricted Funded, 25
- Physical Plant, 64-72
- Presidents of Boston College, 90
- Profile, Boston College, 11