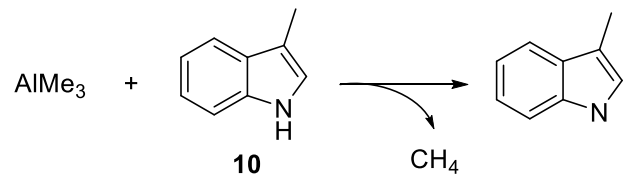
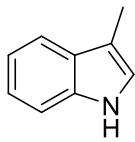
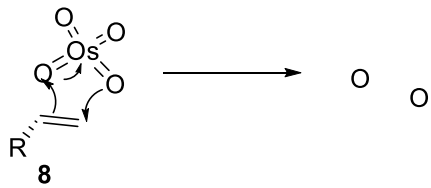
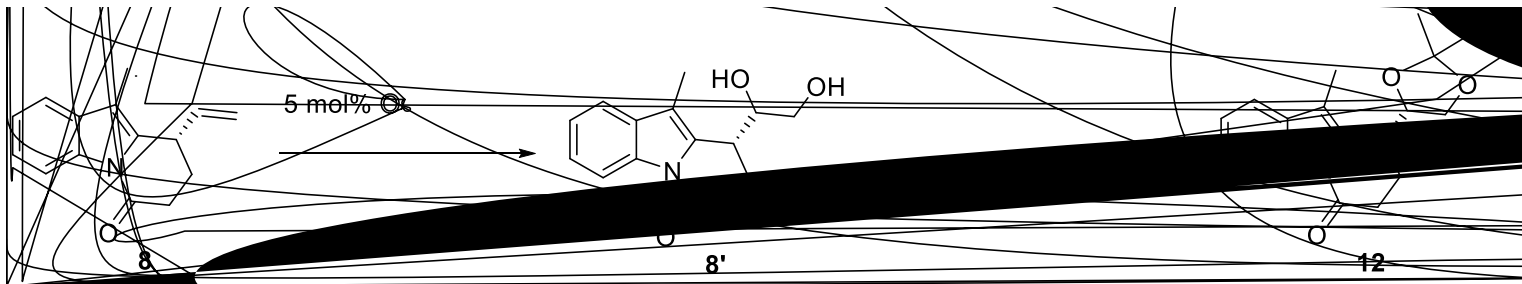
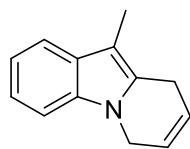


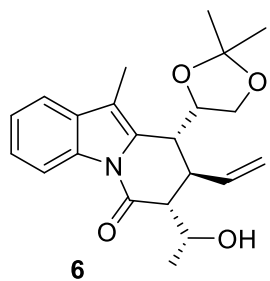
Xiao Liang,^{†,‡} Shi-Zhi Jiang,[†] Kun Wei,[†] and Yu-Rong Yang^{*,†}

[†]State Key Laboratory of Phytochemistry and Plant Resources in West China, Kunming Institute of Botany, Chinese Academy of Sciences, Kunming 650201, China [‡]University of Chinese Academy of Sciences, Beijing 100049, China









6

